

# Superior Tool®



**Plumbing Tools  
and Accessories >**

**MAKE IT HAPPEN™**



## High Quality Products

---

Superior Tool has been manufacturing and selling plumbing tools in the U.S. for over 70 years. During that time we've developed numerous patented products specifically tailored for professional plumbers and DIY enthusiasts. Our passion for the industry and serving the people who make their living with their hands is evident.

Superior Tool pipe working and plumbing tools are engineered and manufactured from the highest quality materials to meet or exceed all industry standards. Our innovative products save time and eliminate problems, making every piping and plumbing job easier.

## Made to Last a Lifetime

---

Very simply, we build Superior Tools to last. Each product is covered by our "Lifetime Guarantee." You can rest assured you are getting an industrial quality product.

## Fast, Accurate, Easy

---

We thank you for allowing us to become your trusted source for pipe working and plumbing tools. Our promise to you is "No Barriers To Buy®." Our goal is "Make it Happen™" with exceptional products and outstanding customer service.

## Total Support and Expertise

---

Call us toll free from anywhere in the U.S. or Canada, Monday - Friday, 8:00 am - 5:00 pm CST. Since Superior Tool is a brand of C.H. Hanson, all support is handled by qualified C.H. Hanson sales representatives. Invoicing, emails and communications are also from C.H. Hanson.

Visit us at: [superiortool.com](http://superiortool.com) for a full listing of all our products and to see new introductions. You can also spread the word about Superior Tool by connecting with us on social media.

P: 630.848.2000

P: 800.827.3398 (Toll Free in U.S. or Canada)

F: 800.827.5834

[sales@superiortool.com](mailto:sales@superiortool.com) (please note email replies may come from [chhanson.com](http://chhanson.com))

Superior Tool Company

2000 N. Aurora Road, Naperville, IL 60563

Superior Tool is member of  
C.H. Hanson's family of exceptional brands.

superiortool.com



**MAKE IT HAPPEN™**

## TABLE OF CONTENTS

|  |       |
|--|-------|
| <b>Basin Wrenches</b>                                    |       |
| Basin Buddy™ Nut Wrench .....                            | 17    |
| 11" Basin Wrench .....                                   | 18    |
| Telescopic Basin Wrench .....                            | 18    |
| <b>Faucet Handle / Sleeve Pullers</b>                    |       |
| Plumber's Handle / Sleeve Puller Kit .....               | 15    |
| Handle / Sleeve Puller .....                             | 16    |
| Compression Sleeve Puller .....                          | 16    |
| <b>Pliers</b>  |       |
| Soft-Jaw Pipe Wrench Pliers .....                        | 16    |
| Soft-Jaw Plumbing Pliers .....                           | 16    |
| <b>Pipe Tools</b>  |       |
| Heavy-Duty Pipe Wrenches .....                           | 13    |
| Heavy-Duty Pipe Cutter .....                             | 14    |
| Internal Pipe Wrenches / Nipple Extractor .....          | 14    |
| Tubing / Pipe Cutter .....                               | 14    |
| <b>Pipe Tools / PVC and PEX</b>                          |       |
| Mini Hacksaw .....                                       | 11    |
| PEX Pocket Crimper .....                                 | 12    |
| PVC Ratcheting Cutter .....                              | 10    |
| PVC Soft Grip Ratcheting Cutters .....                   | 10    |
| PVC Ratcheting Pipe Cutter .....                         | 10    |
| PVC Nipple Extractor .....                               | 11    |
| PVC Plumber's Saw .....                                  | 11    |
| PVC Internal Pipe Cutter .....                           | 12    |
| PVC Cable Saw .....                                      | 12    |
| <b>Replacement Parts</b>                                 |       |
| Cutter Wheels .....                                      | 28-29 |
| Deburring Tool Blades .....                              | 30    |
| Mini Hacksaw Blades .....                                | 30    |
| PVC Cutter Blade .....                                   | 30    |
| PVC Pipe Cutter Blade .....                              | 30    |
| PVC Saw Blade .....                                      | 30    |
| <b>Sink Drain, Shower, Supply Line, and Tub Wrenches</b> |       |
| Adjustable Combinations Wrench .....                     | 19    |
| Basket Strainer Wrench .....                             | 21    |



**Sink Drain, Shower, Supply Line, and Tub Wrenches**

|   |    |
|---|----|
| DrainKey™ .....                           | 22 |
| 6-Step Faucet Seat Wrench .....           | 19 |
| 2-Piece Faucet Seat Wrench Set .....      | 19 |
| Plumber's Pal Drain Wrench .....          | 18 |
| Premium 6-Piece Socket Wrenches Set ..... | 21 |
| Pop Up Plug Wrench .....                  | 22 |
| SinkDrain™ Wrench .....                   | 18 |
| TightSpot™ Wrench .....                   | 21 |
| Tub Drain Wrench / Dumbell Wrench .....   | 22 |
| Tub Drain Extractor™ .....                | 20 |

**Specialty Plumbing Tools and Accessories**

|   |    |
|---|----|
| 4-Way Key .....   | 25 |
| 5-Piece Bolt Extractor Kit .....                        | 23 |
| Bayonet™ Deluxe Garbage Disposal Installation Kit ..... | 26 |
| Drum Trap Cleanout Wrench .....                         | 25 |
| Manual DrainStick™ .....                                | 25 |
| No Hub Torque Wrench .....                              | 23 |
| Shower Arm Thread Extractor .....                       | 23 |
| SuperRing™ Closet Flange Repair Ring .....              | 24 |
| Water Supply ShutOff™ Wrench .....                      | 23 |
| Mr. Thread Cleaner™ .....                               | 25 |

**Tube Prepping Tools**

|                                     |   |
|-------------------------------------|---|
| Power Tube Cleaning Brush .....     | 9 |
| 4-in-1 Fitting and Tube Brush ..... | 9 |
| Fitting Brush .....                 | 9 |
| Deburring Tool .....                | 9 |

**Tubing Tools**

|                             |     |
|-----------------------------|-----|
| Tubing Cutters .....        | 4-7 |
| Flaring Tools .....         | 8   |
| Tubing Bender, Lever .....  | 8   |
| Tubing Bender, Spring ..... | 8   |

**Utility Service Wrenches**

|   |    |
|---|----|
| Emergency Gas / Water Shut-off Wrench ..... | 27 |
| Emergency Gas Shut-off Wrench .....         | 27 |

## TUBING TOOLS

**Made to last, and  
born in the U.S.A.**

Choose from a wide variety of Superior Tool tubing and pipe cutters. You can rest assured you are purchasing a product that is used and endorsed by plumbers everywhere.



35236  
1-1/8" O.D. Screw-Feed  
Tubing Cutter (#350)

**Mini Cutters for tight  
confined areas**

**Screw-Feed Cutters for  
copper, aluminum and mild steel**

**Large Diameter Tubing and  
Pipe Cutters for bigger tasks**

- Zinc plated or epoxy painted to resist rust and corrosion
- Replaceable SXT™ cutter wheels provide long life and exceptionally clean cuts
- Built-in deburring tool
- Large knobs for quick tightening and fast cuts

## TUBING TOOLS

### 5/8" O.D. Mini Tubing Cutter Roller-less Design



Use in confined areas on copper, aluminum and mild steel. Large, knurled knob allows easy tightening. Zinc plated body. One-piece knob and screw. Heat-treated alloy steel cutting wheel. For replacement cutting wheel see pg. 29.



| Part No. | Pipe Capacity | Weight   | Replacement Wheel No. |
|----------|---------------|----------|-----------------------|
| 35025    | 1/8" to 5/8"  | 0.2 lbs. | 42525                 |

### Mini Tubing Cutters



Mini for confined areas on copper, aluminum and mild steel. Corrosion-resistant, durable epoxy powder-coated finish. Large, knurled knob and rollers for easy tightening. One-piece knob and screw. Heat-treated alloy steel cutting wheel. For replacement cutting wheels see pg. 29.



| Part No. | O.D.   | Pipe Capacity  | Weight    | Replacement Wheel No. |
|----------|--------|----------------|-----------|-----------------------|
| 35030    | 5/8"   | 1/8" to 5/8"   | 0.21 lbs. | 42525                 |
| 35078    | 7/8"   | 1/8" to 7/8"   | 0.29 lbs. | 42525                 |
| 36000    | 1"     | 3/16" to 1"    | 0.33 lbs. | 42135                 |
| 35180    | 1-1/8" | 1/8" to 1-1/8" | 0.40 lbs. | 42835                 |

### QuickCut™ Tubing Cutters

Easy-to-use tubing cutter: just clip on and rotate. No adjustments required, and simple enough it can be used with one hand. Works great in confined areas. Designed to eliminate external burrs. For replacement cutting wheel see pg. 29.



| Part No. | Nominal Tubing | Pipe Capacity | Weight    | Replacement Wheel No. |
|----------|----------------|---------------|-----------|-----------------------|
| 35012    | 1/2"           | 1/2"          | 0.53 lbs. | 42526                 |
| 35034    | 3/4"           | 3/4"          | 0.57 lbs. | 42526                 |

## TUBING TOOLS



### 1-1/8" O.D. Value Screw-Feed Tubing Cutter

For medium diameter tubing with fine-pitch thread for increased torque. Cuts and deburrs copper, aluminum and mild steel. Zinc-plated finish on body. Heat-treated alloy steel cutting wheel. For replacement cutting wheel see pg. 29.

| Part No. | Pipe Capacity  | Weight    | Replacement Wheel No. |
|----------|----------------|-----------|-----------------------|
| 35275    | 1/8" to 1-1/8" | 0.68 lbs. | 42835                 |



### 1-1/8" O.D. Screw-Feed Tubing Cutter (#350)

Traditional style heavy-duty, mid-range cutter. Cuts and deburrs copper, aluminum and mild steel. Durable epoxy powder-coated finish for corrosion-resistance and long life. For replacement cutting wheel see pg. 29.



| Part No. | Pipe Capacity  | Weight    | Replacement Wheel No. |
|----------|----------------|-----------|-----------------------|
| 35236    | 1/8" to 1-1/8" | 0.85 lbs. | 42835                 |



### 1-1/4" O.D. Enclosed-Feed Tubing Cutter (ST-1200™)

Superior's highest quality mid-sized tubing cutter. Enclosed feed mechanism protects threads against dirt and damage to the screw. Quick-to-operate in the field: spin open, spin closed. Durable epoxy powder-coated finish for long life. Heat-treated alloy steel cutting wheel. For replacement cutting wheel see pg. 29.



| Part No. | Pipe Capacity  | Weight    | Replacement Wheel No. |
|----------|----------------|-----------|-----------------------|
| 35219    | 1/8" to 1-1/4" | 0.77 lbs. | 42835                 |



### 1-3/8" O.D. Screw Feed Tubing Cutter (ST-1000™)

Rugged, lightweight design is perfect for all plumbing applications. Quickly cut and debur copper, aluminum and mild steel on medium diameter tubing. The durable epoxy powder-coated finish for years of quality performance. Replaceable heat-treated alloy steel cutting wheel. For replacement cutting wheel see pg. 29.



| Part No. | Pipe Capacity   | Weight    | Replacement Wheel No. |
|----------|-----------------|-----------|-----------------------|
| 35247    | 1/8" to 1-3/16" | 0.68 lbs. | 42835                 |



## TUBING TOOLS

### 1-5/8" O.D. Large Diameter Tubing Cutter (ST-1500™)

Cuts and deburrs copper, aluminum and mild steel on larger diameters. For commercial and industrial applications. Durable epoxy powder-coated finish for corrosion resistance and long life. Heat-treated alloy steel cutting wheel. For replacement cutting wheel see pg. 29.



| Part No. | Pipe Capacity  | Weight    | Replacement Wheel No. |
|----------|----------------|-----------|-----------------------|
| 35238    | 1/4" to 1-5/8" | 1.03 lbs. | 42835                 |

### 2" Heavy-Duty Pipe Cutter

Cast iron pipe cutter with wide rollers that provide smooth cutting of steel and iron Schedule 40 pipe. Extra long "T" handle for excellent leverage. Pipe capacity from 1/2" to 2" Schedule 40 pipe. Durable epoxy powder-coated finish. Alloy steel, heat-treated cutter wheel for long cutting life. For replacement cutting wheel see pg. 29.

| Part No. | Pipe Capacity | Weight    | Replacement Wheel No. |
|----------|---------------|-----------|-----------------------|
| 02802    | 1/2" to 2"    | 5.62 lbs. | 42215                 |



### Tubing / Pipe Cutter (ST-2000™)

Cuts up to 1" Schedule 40 pipe and 2" copper tubing. Capacity: 5/8" to 2-1/8" O.D. tubing, conduit and steel fencing; 3/8" to 1" steel or iron pipe, including galvanized. Strong, lightweight aluminum construction and a comfort non-slip, polymer grip.

Durable epoxy powder-coated finish for corrosion-resistance and long life. Heat-treated alloy steel cutting wheel. For replacement cutting wheel see pg. 29.



| Part No. | Pipe Tubing Capacity | Weight    | Replacement Wheel No. |
|----------|----------------------|-----------|-----------------------|
| 36878    | 5/8" to 2-1/8"       | 1.41 lbs. | 42348                 |

## TUBING TOOLS



### Professional Flaring Tool

Flares all standard sizes of soft copper, brass, aluminum and soft steel tubing from 5/8" O.D. Self-centering yoke makes 45° flare joints without splitting or cracking. Long handle for added leverage. Large wing nuts permit easy, positive locking on the tubing. Flares sizes 3/16", 1/4", 5/16", 3/8", 7/16", 1/2" and 5/8".

| Part No. | Flare Sizes                                 | Weight    |
|----------|---|-----------|
| 17515    | 3/16", 1/4", 5/16", 3/8", 7/16", 1/2", 5/8" | 2.35 lbs. |



### Quick Release Flaring Tool

Large, slotted quick release wing nuts, for easy set up and removal. Flares all standard sizes of soft copper, brass, aluminum and soft steel tubing from 5/8" O.D. Self-centering yoke makes 45° flare joints without splitting or cracking. Long handle for added leverage. Flares sizes 3/16", 1/4", 5/16", 3/8", 7/16", 1/2" and 5/8".

| Part No. | Flare Sizes                                 | Weight    |
|----------|---|-----------|
| 17520    | 3/16", 1/4", 5/16", 3/8", 7/16", 1/2", 5/8" | 2.35 lbs. |



### 3-in-1 Lever Tube Bender

The 3-in-1 Lever Bender is ideal for air conditioning and refrigeration tubing use. Marked at 0°, 45° and 90° for precise angle bends. Die-cast aluminum with epoxy powder-coated finish for a durable, corrosion-resistant long life.

| Part No. | Capacity          | Weight    |
|----------|-------------------|-----------|
| 66575    | 1/4", 5/16", 3/8" | 1.07 lbs. |



### 4-Piece Set Spring Tube Bender

Spring benders are made of zinc-plated steel wire. Easily make bends in soft materials, such as copper, brass, aluminum and stainless steel, up to 180°. Set includes: 1/4", 3/8", 1/2" and 5/8" spring benders.

| Part No. | Capacity               | Weight    |
|----------|------------------------|-----------|
| 61600    | 1/4", 3/8", 1/2", 5/8" | 1.23 lbs. |

## TUBE PREPPING TOOLS

### Power Tube Cleaning Brushes

Power tube cleaning brushes for 1/2" and 3/4" tubing. Ideal for projects requiring a number of soldered or brazed fittings. Can be used with regular key chucks, chuck adapters and keyless chucks. 1/4" hex shank.



| Part No. | Tubing Size | Weight    |
|----------|-------------|-----------|
| 18912    | 1/2"        | 0.08 lbs. |
| 18934    | 3/4"        | 0.09 lbs. |



### 4-In-1 Fitting and Tube Brush

Do the job of 4 brushes with this uniquely designed tool. Prep 1/2" and 3/4" I.D. and O.D. copper tubing prior to soldering. Ensures clean surfaces and a good, leak-free solder joint.

| Part No. | Tubing Size | Weight    |
|----------|-------------|-----------|
| 99643    | 1/2", 3/4"  | 0.18 lbs. |



### 1" Fitting Brush

Will not rust — substantially out-performs standard fitting brushes. Double stem (4 wire) double-spiral construction. Long lasting stainless steel bristles will not contaminate solder joints.

Spark-proof 300 series stainless steel design meets MIL and ASTM specifications where a spark-proof brush is specified for explosive gas atmospheres.

The ASTM Spec has been approved for use by agencies of the U.S. Department of Defense (MIL SPEC).



| Part No. | Bristle Length | Weight    |
|----------|----------------|-----------|
| 18610    | 1"             | 0.15 lbs. |



### Deburring Tool

The quickest way to remove burrs and sharp edges after cutting copper, brass, aluminum and mild steel. Swivel action of blade removes internal or external burrs easily and quickly. Comes with 2 hardened steel blades stored in the handle. For replacement blade see pg. 30.



| Part No. | Weight    | Replacement Blade No. |
|----------|-----------|-----------------------|
| 18850    | 0.13 lbs. | 42424                 |



## PIPE TOOLS / PVC AND PEX



### 1" PVC Ratcheting Cutter

Value designed, one-hand cutter for quick, clean cuts through hose, plastic tubing and PVC Schedule 40 pipe up to 1". Cutting capacity to 1-5/16". Die cast handles. Stainless steel blade.

| Part No. | Cutting Capacity | Weight    |
|----------|------------------|-----------|
| 37110    | 1-5/16"          | 0.81 lbs. |



### PVC Soft Grip Ratcheting Cutters

One-handed operation frees up the other hand to hold the work. Aluminum cast handles with soft grip for comfort. Durable powder coat finish for easy clean up. Hardened stainless steel blade design with pointed edge to pierce the pipe for smooth effortless cuts. For 37116 replacement blade see pg. 30.

| Part No. | Cutting Capacity                    | Weight   |
|----------|-------------------------------------|----------|
| 37118    | 1" nominal PVC pipe, or 1-5/8" O.D. | 1.4 lbs. |
| 37116    | 2" nominal PVC pipe, or 2-1/2" O.D. | 1.4 lbs. |



### 2" PVC Ratcheting Pipe Cutter

Extra-large capacity cuts up to 2" Schedule 40 PVC and polyethylene pipe up to 2-1/2" O.D.. Cutter's heavy-duty ratchet mechanism maximizes cutting. The wide hooked jaw holds pipes securely for fast, clean cuts. Easier and quicker than a hacksaw.

| Part No. | Cutting Capacity | Weight   |
|----------|------------------|----------|
| 37115    | 2-1/2"           | 2.9 lbs. |



## PIPE TOOLS / PVC AND PEX

### 1/2" and 3/4" PVC Nipple Extractor

Removes 1/2" and 3/4" broken risers from PVC fittings. Made of high-quality, durable materials with a rubberized grip for easy handling. For outdoor PVC pipe use.

| Part No. | Capacity      | Weight   |
|----------|---------------|----------|
| 05270    | 1/2" and 3/4" | 0.3 lbs. |



### PVC Plumber's Saw

Cuts PVC, CPVC, ABS, wood, drywall and more. Lightweight aluminum die-cast handle with ergonomic grip. Blade replaces easily and changes in seconds. For replacement blade see pg. 30.

| Part No. | Blade Length | Weight   | Replacement Blade No. |
|----------|--------------|----------|-----------------------|
| 37513    | 13"          | 0.8 lbs. | 37613                 |



### Mini Hacksaw

For cutting wood, plaster, steel, brass, etc. in tight quarters. Cushioned handle. Highest quality heat-treated, high carbon, 6" long steel blade, 32 teeth per inch. For replacement blade see pg. 30.

| Part No. | Blade Length | Weight   | Replacement Blade No. |
|----------|--------------|----------|-----------------------|
| 37700    | 6"           | 0.3 lbs. | 37701                 |



## PIPE TOOLS / PVC AND PEX



### 1-1/4" Internal PVC Pipe Cutter

Use for cutting PVC pipe internally. Heat-treated saw blade. Use in corded or cordless drills. Cuts PVC, CPVC, ABS and more. Use to cut 1-1/4" diameter pipe or larger. For replacement blade see pg. 30.

| Part No. | Blade Diameter | Weight    | Replacement Blade No. |
|----------|----------------|-----------|-----------------------|
| 37516    | 1-1/4"         | 0.25 lbs. | 47520                 |



### PVC Cable Saw

For fast cutting of PVC plumbing, drain and irrigation pipe. Great for tight spots. Only needs 1/4" clearance. Works faster and easier than a hacksaw. Stainless steel cable will not rust.

| Part No. | Blade Length | Weight    |
|----------|--------------|-----------|
| 37730    | 24"          | 0.07 lbs. |



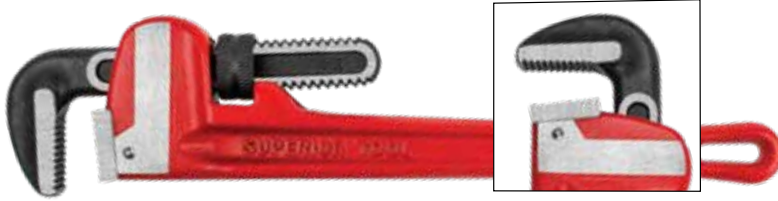
### PEX Pocket Crimper

One handy tool crimps 3/8", 1/2" and 3/4" black copper rings and fits in your tool box. Meets ASTM F1807 Spec for crimping PEX. Includes tool, pouch, gauge and instructions for use.



| Part No. | Capacity         | Weight   |
|----------|------------------|----------|
| 07100    | 3/8", 1/2", 3/4" | 1.4 lbs. |

## PIPE TOOLS

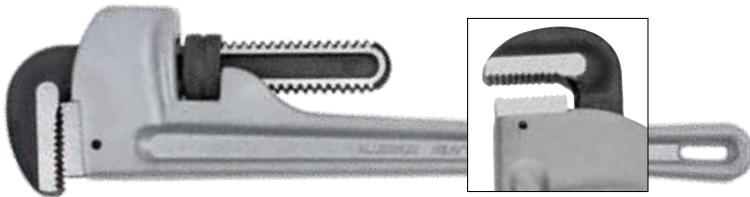


Superior Tool's heavy-duty cast-iron pipe wrenches are durable, easy-to-adjust and perform flawlessly in the toughest situations.

New, stronger ductile iron material and our unique PowerFlange™ design add additional strength at critical stress areas of the handle making these wrenches the strongest in the industry; 50% stronger. Many parts interchange with other manufacturers' pipe wrenches.

### Heavy-Duty Straight Cast-Iron Pipe Wrenches

| Length | Part No. | Pipe Capacity | Weight     |
|--------|----------|---------------|------------|
| 8"     | 02808    | 1"            | 0.95 lbs.  |
| 10"    | 02810    | 1-1/2"        | 1.9 lbs.   |
| 14"    | 02814    | 2"            | 3.9 lbs.   |
| 18"    | 02818    | 2-1/2"        | 5.5 lbs.   |
| 24"    | 02824    | 3"            | 9.26 lbs.  |
| 36"    | 02836    | 5"            | 20.36 lbs. |
| 48"    | 02848    | 6"            | 36.1 lbs.  |



Provides the same features as the cast-iron models, but weighs almost 40% less. Rugged construction, easy-to-adjust and flawlessly performance in the toughest situations. Durable epoxy powder-coated finish. Exceeds government specification GGG651 Type II, Class C.

### Heavy-Duty Straight Aluminum Pipe Wrenches

| Length | Part No. | Pipe Capacity | Weight    |
|--------|----------|---------------|-----------|
| 14"    | 04814    | 2"            | 2.36 lbs. |
| 18"    | 04818    | 2-1/2"        | 3.47 lbs. |
| 24"    | 04824    | 3"            | 5.6 lbs.  |

### Pipe Vise

Heavy-duty cast iron pipe vise. Yoke hook grips and locks tight. Base has built-in pipe support and mounting holes. Durable, pipe gripping three-piece hardened jaws with floating top jaw make for a quick workpiece set.

Shock-proof, malleable iron frame guaranteed not to break or warp. Durable epoxy powder-coated finish.



| Part No. | Pipe Capacity | Weight    |
|----------|---------------|-----------|
| 02816    | 1/8" to 2"    | 2.36 lbs. |

## PIPE TOOLS



### 2" Heavy-Duty Pipe Cutter

Cast iron pipe cutter with wide rollers that allow smooth cutting of steel and iron Schedule 40 pipe. Extra long "T" handle for excellent leverage. Pipe capacity from 1/2" to 2" Schedule 40 pipe. Durable epoxy powder-coated finish. Alloy steel, heat-treated cutter wheel for long cutting life. For replacement cutting wheel see pg. 29.

| Part No. | Pipe Capacity | Weight    | Replacement Wheel No. |
|----------|---------------|-----------|-----------------------|
| 02802    | 1/2" to 2"    | 5.62 lbs. | 42215                 |



### Tubing / Pipe Cutter (ST-2000™)



Cuts up to 1" Schedule 40 pipe and 2" copper tubing. Capacity: 5/8" to 2-1/8" O.D. tubing, conduit and steel fencing; 3/8" to 1" steel or iron pipe, including galvanized. Strong, lightweight aluminum construction and a comfort non-slip polymer grip.

Durable epoxy powder-coated finish for corrosion-resistance and long life. Heat-treated alloy steel cutting wheel. For replacement cutting wheel see pg. 29.

| Part No. | Pipe Tubing Capacity | Weight    | Replacement Wheel No. |
|----------|----------------------|-----------|-----------------------|
| 36878    | 5/8" to 2-1/8"       | 1.41 lbs. | 42348                 |



### Internal Pipe Wrenches (Nipple Extractors)

Eliminates damage to threads, walls, and external nickel or chrome finish. Exclusive "Cam Action" provides non-slip grip on the inside of nipples, pipes and fittings and can be turned clockwise or counter-clockwise. Durable heat-treated alloy steel.

| Size | Part No. | Pipe Capacity | Weight    |
|------|----------|---------------|-----------|
| 3/8" | 05238    | 3/8"          | 0.25 lbs. |
| 1/2" | 05212    | 1/2"          | 0.35 lbs. |
| 3/4" | 05234    | 3/4"          | 0.5 lbs.  |



## FAUCET HANDLE / SLEEVE PULLERS

**Pull handles and sleeves with ease**



Remove frozen faucet handles for reseating and repairs



Save supply lines and other critical tubing by removing compression sleeves



### 03876 – Plumber's Handle / Sleeve Puller Kit

- Truly rugged construction - arms resist flexing when placed under pressure
- Bracket arms can adjust to fit both large and small faucet knobs and handles
- Backed by Superior Tool's iron clad Lifetime Warranty

| Part No. | Weight    |
|----------|-----------|
| 03876    | 0.93 lbs. |



See the 03876 Plumber's Handle / Sleeve Puller Kit in use!



**Superior Tool**  
EXCLUSIVE  
**PATENTED**

Our patented adapter removes the toughest compressed sleeves

## FAUCET HANDLE / SLEEVE PULLERS



### Handle / Sleeve Puller Kit

For pulling faucets and compression sleeves. Compression sleeve puller (ferrule remover) is included in kit for quick and easy removal of 1/2" copper compression sleeves and nuts.

| Part No. | Weight    |
|----------|-----------|
| 03875    | 0.78 lbs. |



### Compression Sleeve Puller

The quick-and-easy way to remove leaking compression sleeves without damaging walls. Unique armless design screws directly into compression nut for fast removal of compression sleeve or ferrule. For 1/2" (5/8" O.D.) compression fittings only.

| Part No. | Weight    |
|----------|-----------|
| 03943    | 0.54 lbs. |

## PLIERS



### Soft-Jaw Pipe Wrench Pliers

For basin and sink locknuts, trap nuts and toilet spuds. Heavy-duty hardened steel construction. "Soft Jaws" won't mar or scratch polished/plated surfaces. Vinyl grips for comfort and ease. For plastic and metal nuts 1-1/4", 1-1/2" and 2".

| Part No. | Nut Capacity       | Weight    |
|----------|--------------------|-----------|
| 06011    | 1-1/4", 1-1/2", 2" | 0.12 lbs. |



### Soft Jaw Plumbing Pliers

"Soft Jaws" won't mar or scratch polished/plated surfaces. Vinyl grips for comfort and ease. Use on plastic and metal basin and sink locknuts, trap nuts and toilet spuds 1-1/4", 1-1/2" and 2".

| Part No. | Nut Capacity       | Weight    |
|----------|--------------------|-----------|
| 06012    | 1-1/4", 1-1/2", 2" | 0.91 lbs. |

## BASIN WRENCHES

### The best buddy for tight spaces

#### 03825 – Basin Buddy™ Universal Faucet Nut Wrench

The Basin Buddy wrench fits metal lock nuts, coupling nuts, PVC lock nuts, most metal and plastic toilet supply nuts.

| Part No. | Ratchet Drive | Weight    |
|----------|---------------|-----------|
| 03825    | 1/4" and 3/8" | 0.23 lbs. |



Superior Tool  
EXCLUSIVE  
**PATENTED**

made in  
**USA**

Only available  
from  
Superior Tool



Fits numerous  
plumbing nuts

- Accurately machined from a one-piece high quality aluminum blank
- Works with a 3/8" ratchet. Use an extension or universal joints to reach difficult locations - 1/4" to 3/8" drive adapter included
- Backed by Superior Tool's iron clad Lifetime Warranty



See the 03825  
Basin Buddy  
in use!



## BASIN WRENCHES

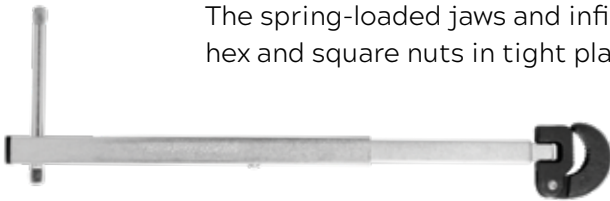
### 11" Basin Wrench



The spring-loaded jaws and infinitely adjustable head angle design accommodates up to 1" hex and square nuts in tight places.

| Part No. | Length | Nut Capacity | Weight    |
|----------|--------|--------------|-----------|
| 03811    | 11"    | 1"           | 1.30 lbs. |

### Telescopic Basin Wrench



The spring-loaded jaws and infinitely adjustable head angle design accommodates up to 1" hex and square nuts in tight places. Telescoping shank extends to 17".

| Part No. | Length     | Nut Capacity | Weight    |
|----------|------------|--------------|-----------|
| 03812    | 11" to 17" | 1"           | 1.95 lbs. |

## SINK DRAIN, SHOWER, SUPPLY LINE, AND TUB WRENCHES



### Plumber's Pal - Professional Drain Wrench

For strainer lock nuts and drop-in shower drains. Fits hex nuts and all 4-, 6- and 8-tab locking nuts on strainer drains. Square end of the tool is specifically designed for tightening stand-up shower drains.

| Part No. | Weight    |
|----------|-----------|
| 03710    | 0.65 lbs. |



### SinkDrain™ Wrench

An innovative, universal design for installation and repair of 1-1/2" kitchen and 1-1/4" bathroom P-trap DWV nuts, kitchen sink basket strainer nuts and 1-1/4" to 1-1/2" plastic DWV nuts with wing tabs. Also has a handy 3/8" square socket drive, too.



| Part No. | Weight    |
|----------|-----------|
| 03845    | 0.58 lbs. |



## SINK DRAIN, SHOWER, SUPPLY LINE, AND TUB WRENCHES

### Adjustable Combination Wrench

Fits spud nuts, slip and lock nuts and basket strainer nuts for various under sink and toilet work. Adjusts from 1" to 3". Zinc-plated with cushion grip handle.

| Part No. | Nut Capacity | Weight   |
|----------|--------------|----------|
| 03840    | 1" to 3"     | 0.7 lbs. |



### 6-Step Faucet Seat Wrench

Removes replaceable faucet seats. 6" x 6" heat-treated steel. Universal fit.

| Part No. | Weight    |
|----------|-----------|
| 03860    | 0.50 lbs. |



### 2-Piece Faucet Seat Wrench Set

Remove replaceable faucet seats. Each tool is 6" x 6" heat-treated steel. Universal fit.

| Part No. | Weight    |
|----------|-----------|
| 03765    | 0.90 lbs. |



## SINK DRAIN, SHOWER, SUPPLY LINE, AND TUB WRENCHES

**Remove stubborn,  
corroded tub drains**

**Superior Tool  
EXCLUSIVE  
PATENTED**



**Firmly tap the extractor  
into the tub drain**



**Remove the drain with  
a ratchet or wrench**

### 05255 – Tub Drain Extractor™

**Turn a difficult, time  
consuming repair  
into an easy "tap and removal"**

| Part No. | Weight    |
|----------|-----------|
| 05255    | 0.67 lbs. |

- Removes most stubborn, "frozen" tub drains
- Knurled teeth "bite" into the drain for a secure hold and removal
- Use with a 1/2" drive ratchet or wrench
- Hardened steel for durability
- Plated for corrosion resistance



**See the 05255 Tub Drain  
Extractor in use!**

**Only available  
from  
Superior Tool**



## SINK DRAIN, SHOWER, SUPPLY LINE, AND TUB WRENCHES

### Premium 6-Piece Socket Wrenches Set

Made of heavy durable material and are 25% longer for access to recessed valve stems in tile-covered walls. No more rounding off valve stem edges. Includes sizes: 21/32" x 27/32", 29/32" x 31/32", 1-1/32" x 1-3/32", 1-5/32" x 1-9/32", 1-11/32" x 1-7/16", a turner bar and a handle wire for easy storage.



| Part No. | Weight   |
|----------|----------|
| 03755    | 2.3 lbs. |

### Basket Strainer Wrench

A must-have for sink installations. Holds basket strainer in place while tightening the lock nut for one person installation.



| Part No. | Weight    |
|----------|-----------|
| 03890    | 0.52 lbs. |

### TightSpot™ Wrenches

Install or remove trap and drain line on pedestal sinks without removing the sink. Save time and money with Superior Tool's Patented TightSpot wrenches. Fits all 6, 8 and 12-sided drain nuts. Also works great on regular drain fittings. Only available from Superior Tool.

**Superior Tool**  
EXCLUSIVE  
**PATENTED**



| Part No. | Drain Nut | Weight    |
|----------|-----------|-----------|
| 03914    | 1-1/4"    | 0.42 lbs. |
| 03915    | 1-1/2"    | 0.43 lbs. |

## SINK DRAIN, SHOWER, SUPPLY LINE, AND TUB WRENCHES



### Pop Up (P.O.) Plug Wrench

Install or remove vanity sink pop-up plugs and tub drains. Prevents rotation during installation and removal.

| Part No. | Weight    |
|----------|-----------|
| 03930    | 0.53 lbs. |



### DrainKey™

Diameter expansion design allows The DrainKey™ to internally grip in a 360° pattern. Expands with an adjustable wrench to unlock or install: bathtub drains, 1-1/4" or 1-1/2" closet spuds, duplex strainers, jr. duo strainers, jr. basket strainers and tray plug drains. An industry embraced tool that expands inside the drain with 3 knurled steel sections and then rotates the drain out using the large nut.

| Part No. | Weight    |
|----------|-----------|
| 04500    | 1.20 lbs. |



### Tub Drain Wrench / Dumbbell Wrench

Innovative, patented design to install and remove tub drains without scratching fine finishes. The only tool of its kind that can be turned with a 3/8" or 1/2" ratchet wrench and extension from either end. Will also remove or install 1/2" square plastic toilet seat nuts. Tested to 100 ft. lbs. of torque.



| Part No. | Weight    |
|----------|-----------|
| 06020    | 0.70 lbs. |

## SPECIALTY PLUMBING TOOLS AND ACCESSORIES

### Shower Arm Thread Extractor

Great for removing hard-to-reach broken shower arm threads. Thin wall 1/2" nipple extractor can also be used in other plumbing applications.

| Part No. | Size                | Weight    |
|----------|---------------------|-----------|
| 05245    | 1" x 3.25" x 7.375" | 0.35 lbs. |



### 5-Piece Bolt Extractor Kit

Extract broken bolts quickly and easily. Five sizes: 1/8", 1/4", 3/8", 1/2", and 3/4". Required drill sizes are noted on the packaging.

| Part No. | Extractor Sizes | Weight    |
|----------|-----------------|-----------|
| 05250    | 1/8" to 3/4"    | 0.65 lbs. |



### 'No Hub' Torque Wrench

Obtain the proper, leak-free seal on couplings with Superior Tool's T-handled preset 60 in.-lbs. torque wrench. The tightening ratchet-action stops when the required torque is reached and then clicks. Use the built-in reverse lever to loosen screws and remove couplings.

One-handed tightening in the right-hand direction. All mechanisms are sealed in the die-cast handle and lubricated for the life of the tool. 5/16" hex drive.

| Part No. | Capacity                             | Weight    |
|----------|--------------------------------------|-----------|
| 03705    | 60 in.-lbs. torque / 5/16" hex drive | 0.84 lbs. |



### Water Supply ShutOff™ Wrench

An easy and safe way to turn off toilet and sink supply water valves. No more broken, leaking valves. Will not damage chrome finish. A full 12" reach to easily work under sinks and behind toilets.

| Part No. | Length | Weight    |
|----------|--------|-----------|
| 03990    | 12"    | 0.33 lbs. |





## SPECIALTY PLUMBING TOOLS AND ACCESSORIES

### Fix a rocking toilet with a SuperRing™

#### 21015 – SuperRing™ - Closet Flange Repair Ring

Repair water leaks around the toilet base.  
Slotted for 1/4" or 5/16" closet bolts.

| Part No. | Capacity             | Weight   |
|----------|----------------------|----------|
| 21015    | 1/4" and 5/16" bolts | .52 lbs. |



**Works on wood and concrete floors**



The SuperRing™  
is only  
available from  
Superior Tool

**Avoid replacing your toilet  
drain pipe or flange**



- A quick, easy solution for a common plumbing issue
- 4 tabs allow you to securely tighten the SuperRing directly to a wood or concrete floor
- Slotted sides align perfectly for toilet bolts
- Powder-coated for corrosion resistance
- Heavy-gauge steel and quality design



**See the 21015  
SuperRing video**

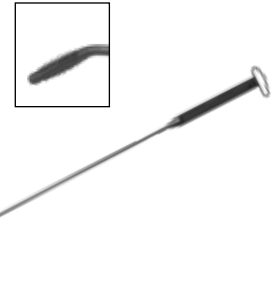
## SPECIALTY PLUMBING TOOLS AND ACCESSORIES

### Manual DrainStick™

Quickly and easily removes hair and "goop" between drain and end of trap. Corrosion-resistant nylon construction is tough and rinses easily. Angled head negotiates turns. Use over and over. No dangerous chemicals.

Superior Tool  
EXCLUSIVE  
PATENTED

made in  
USA



| Part No. | Length | Weight    |
|----------|--------|-----------|
| 03819    | 24"    | 0.05 lbs. |

### Mr. Thread Cleaner™

The Mr. Thread Cleaner™ removes debris and renews threads on hose taps. Works on any common household outdoor faucet. Hook up is easy with a 3/8" socket drive and extension or wrench. The Mr. Thread Cleaner™ is made from hardened steel and plated for long lasting durability.

Superior Tool  
EXCLUSIVE  
PATENTED

made in  
USA



| Part No. | Weight    |
|----------|-----------|
| 05265    | 0.36 lbs. |

### Drum Trap Cleanout Wrench

Specifically designed to make installing or removing threaded cleanout plugs a breeze.



| Part No. | Weight    |
|----------|-----------|
| 03932    | 2.70 lbs. |

### 4-Way Key

Fits stopcocks, sillcocks and valves. Heat-treated steel. Sizes 1/4" - 9/32" and 5/16" - 11/32" internal square.

| Part No. | Capacity       | Weight    |
|----------|----------------|-----------|
| 03960    | 1/4" to 11/32" | 0.15 lbs. |



SPECIALTY PLUMBING TOOLS AND ACCESSORIES



Bayonet™ Deluxe Garbage Disposal Installation Kit



Easily connect a garbage disposal to your kitchen sink using the innovative, patented Bayonet Locking System™. All components lock tightly with a slight turn of the locking nuts. Fits all disposals and works with your existing trap and drain components.

Kit includes the following:

- 1 – 6" Flanged Tailpiece

1 – 10" Flanged Tailpiece

1 – Disposal Tee

1 – J-Bend

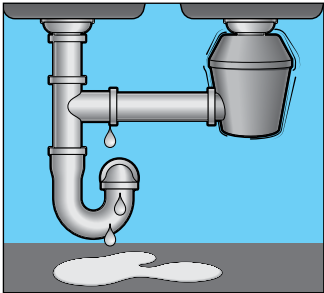
1 – Wall Arm
- 1 – Telescoping 90° Extender

5 – Pre-Lubricated O-Rings

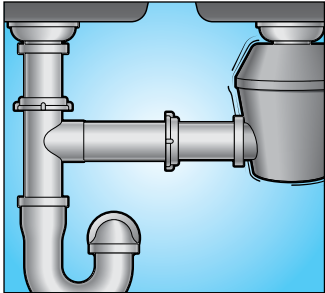
5 – Connection Nuts

1 – Disposal Connection Rubber Washer

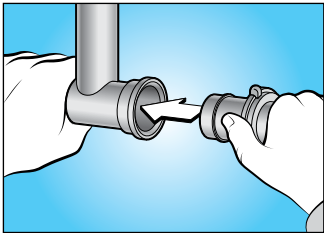
| Part No. | Weight    |
|----------|-----------|
| 26100    | 0.83 lbs. |



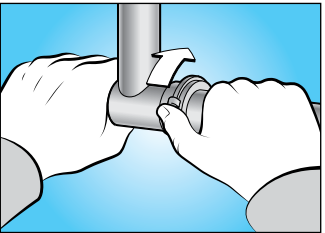
The old method of over or under tightening. Leaks are common.



The Bayonet method: simple twist lock for easy, leak-free installations.



The components are custom designed to fit together perfectly.

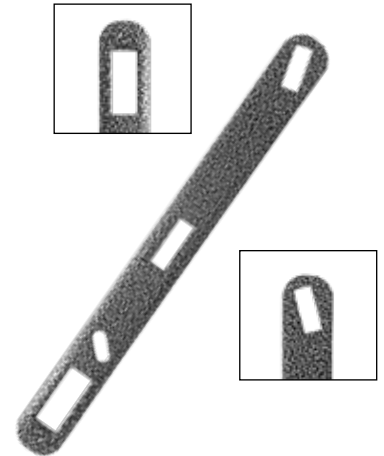


Rotate the locking nut 1/8th turn until it "locks" for a leak-free seal.

**UTILITY SERVICE WRENCHES****Emergency Gas Shut-Off Wrench**

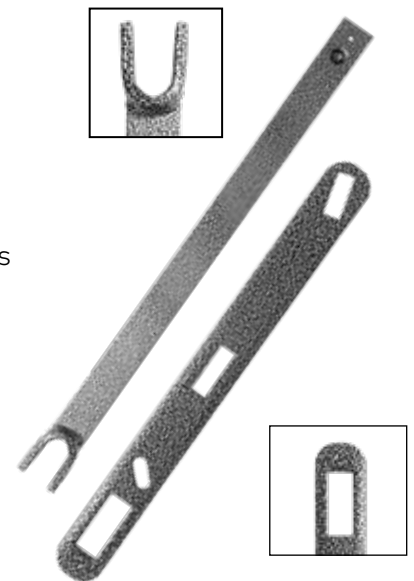
Emergencies occur with little or no warning! Be prepared to turn off your gas at the source. For gas shut off only. 12" length.

| Part No. | Wrench Length | Weight    |
|----------|---------------|-----------|
| 02725    | 12"           | 0.98 lbs. |

**Emergency Gas / Water Shut-Off Wrench**

Emergencies occur with little or no warning! Be prepared to turn off your gas and water at the source. For both gas and water shut off. 15" and 12" lengths.

| Part No. | Wrench Length | Weight    |
|----------|---------------|-----------|
| 02750    | 15" and 12"   | 2.19 lbs. |



## REPLACEMENT PARTS

### The wheel... reinvented



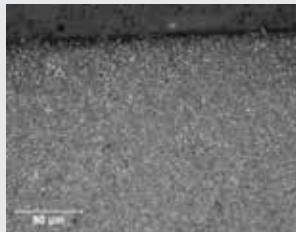
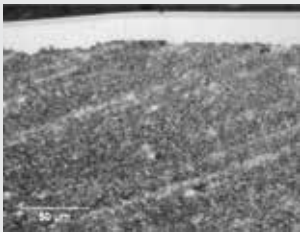
Over 70 years of plumbing expertise goes into every Superior Tool tube cutting wheel



### SXT™ / Superior Xtra Tough™



### Annealed Steel



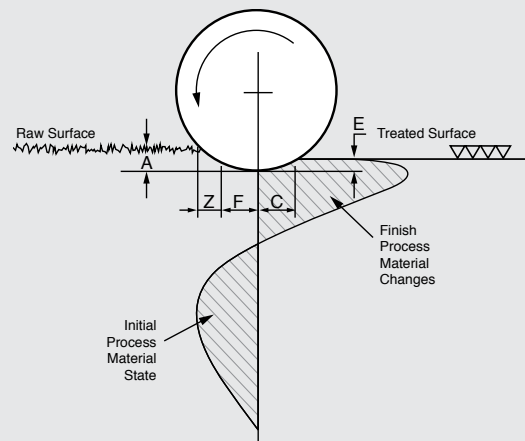
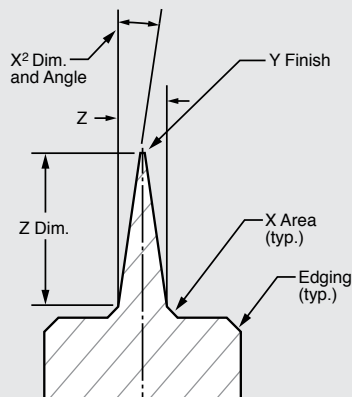
SXT™ cutting wheels use a special annealed steel. This unique material has a higher carbon content to provide deeper, uniform hardening capabilities.

- Superior surface hardening by painstakingly burnishing the wheel's cutting edge
- Each wheel is strengthened from hub-to-edge by cryogenically treatment and careful, slow tempering
- A special black oxide treatment reduces friction and fights corrosion

### Quality Control



### Proprietary Design and Processing



## REPLACEMENT PARTS

### Replacement Tubing and Pipe Cutter Wheels

Two cutter wheels  
per package.



| Tubing / Pipe Cutter | Replacement Wheel                | Iron Pipe | Steel Pipe | Copper | Alum. | Brass |
|----------------------|----------------------------------|-----------|------------|--------|-------|-------|
| 02802                | 42215                            | ■         | ■          |        |       |       |
| 35025                | 42525 <small>made in USA</small> |           | ■          | ■      | ■     |       |
| 35030                | 42525 <small>made in USA</small> |           | ■          | ■      | ■     |       |
| 35078                | 42525 <small>made in USA</small> |           | ■          | ■      | ■     |       |
| 35180                | 42835 <small>made in USA</small> |           |            | ■      | ■     | ■     |
| 35219                | 42835 <small>made in USA</small> |           |            | ■      | ■     | ■     |
| 35236                | 42835 <small>made in USA</small> |           |            | ■      | ■     | ■     |
| 35238                | 42835 <small>made in USA</small> |           |            | ■      | ■     | ■     |
| 35247                | 42835 <small>made in USA</small> |           |            | ■      | ■     | ■     |
| 35275                | 42835 <small>made in USA</small> |           |            | ■      | ■     | ■     |
| 35278                | 42835 <small>made in USA</small> |           |            | ■      | ■     | ■     |
| 36877                | 42348 <small>made in USA</small> | ■         | ■          | ■      |       |       |
| 36878                | 42348 <small>made in USA</small> | ■         | ■          | ■      |       |       |



## REPLACEMENT PARTS



### Replacement Blades for 37700 Mini Hacksaw

Ten replacement blades per package.

| Part No. | Weight    |
|----------|-----------|
| 37701    | 0.11 lbs. |



### Replacement Blades for 18850 Deburring Tool made in USA

Two Deburring Blades per package.

| Part No. | Weight    |
|----------|-----------|
| 42424    | 0.01 lbs. |



### Replacement Blade for 37116 PVC Cutter

Hardened alloy steel for long life. One blade per package.

| Part No. | Weight    |
|----------|-----------|
| 42773    | 0.01 lbs. |



### Replacement Blade for 37516 PVC Pipe Cutter

Heat-treated blade for long life and smoother cuts.

| Part No. | Dia.   | Weight    |
|----------|--------|-----------|
| 47520    | 1-1/4" | 0.05 lbs. |



### Replacement Blade for 37513 PVC Saw

Heat-treated teeth for long life and smoother cuts.

| Part No. | Weight    |
|----------|-----------|
| 37613    | 0.40 lbs. |

**PART NUMBER INDEX**

|                   |                |                   |
|-------------------|----------------|-------------------|
| 02725 ..... 27    | 03990 ..... 23 | 35219 ..... 6     |
| 02750 ..... 27    | 04500 ..... 22 | 35236 ..... 6     |
| 02802 ..... 7, 14 | 04814 ..... 13 | 35238 ..... 7     |
| 02808 ..... 13    | 04818 ..... 13 | 35247 ..... 6     |
| 02810 ..... 13    | 04824 ..... 13 | 35275 ..... 6     |
| 02814 ..... 13    | 05212 ..... 14 | 36000 ..... 5     |
| 02816 ..... 13    | 05234 ..... 14 | 36878 ..... 7, 14 |
| 02818 ..... 13    | 05238 ..... 14 | 37110 ..... 10    |
| 02824 ..... 13    | 05245 ..... 23 | 37115 ..... 10    |
| 02836 ..... 13    | 05250 ..... 23 | 37116 ..... 10    |
| 02848 ..... 13    | 05255 ..... 20 | 37118 ..... 10    |
| 03705 ..... 23    | 05265 ..... 25 | 37513 ..... 11    |
| 03710 ..... 18    | 05270 ..... 11 | 37516 ..... 12    |
| 03755 ..... 21    | 06011 ..... 16 | 37613 ..... 30    |
| 03765 ..... 19    | 06012 ..... 16 | 37700 ..... 11    |
| 03811 ..... 18    | 06020 ..... 22 | 37701 ..... 30    |
| 03812 ..... 18    | 07100 ..... 12 | 37730 ..... 12    |
| 03819 ..... 25    | 17515 ..... 8  | 42215 ..... 29    |
| 03825 ..... 17    | 17520 ..... 8  | 42348 ..... 29    |
| 03840 ..... 19    | 18610 ..... 9  | 42424 ..... 30    |
| 03845 ..... 18    | 18850 ..... 9  | 42525 ..... 29    |
| 03860 ..... 19    | 18912 ..... 9  | 42773 ..... 30    |
| 03875 ..... 16    | 18934 ..... 9  | 42835 ..... 29    |
| 03876 ..... 15    | 21015 ..... 24 | 47520 ..... 30    |
| 03890 ..... 21    | 26100 ..... 26 | 61600 ..... 8     |
| 03914 ..... 21    | 35012 ..... 5  | 66575 ..... 8     |
| 03915 ..... 21    | 35025 ..... 5  | 99643 ..... 9     |
| 03930 ..... 22    | 35030 ..... 5  |                   |
| 03932 ..... 25    | 35034 ..... 5  |                   |
| 03943 ..... 16    | 35078 ..... 5  |                   |
| 03960 ..... 25    | 35180 ..... 5  |                   |

**MAKE IT HAPPEN™**



[superiortool.com](http://superiortool.com)



Superior Tool - A division of C.H. Hanson Company, an Illinois corporation

## Limited Lifetime Warranty

Superior Tool warrants this product will be free from defects in material or workmanship and fit for the purpose intended. This warranty does not cover (a) defects in or damages to the product from (i) misuse, abuse, normal wear and tear, (ii) failure to properly maintain the product, (iii) the product having been heated, ground or otherwise altered, or used for a purpose other than that for which it was intended, (b) expendable and/or parts of the product that deteriorate by normal use (for example cutting wheels, blades, pipe wrench jaws), (c) damages to the product from alteration or abuse of the product or its use other than for its intended purpose, or (d) damages to the product caused by packing or freight.

This warranty is conditioned upon Purchaser (a) maintaining the product at all times and (b) seeing that those using the product are familiar with the product, the written materials delivered with the product regarding its use and maintenance (for example warnings, cautions and instructions). Failure to abide by and fulfill the content of these written directions voids this warranty.

Superior Tool's liability is limited to the repair or replacement, at its option, of any product covered by this Warranty. This warranty is the purchaser's exclusive remedy against Superior Tool for any totally or partially inoperable product. Under no circumstances is Superior Tool liable for any direct, indirect, incidental, special, or consequential damages, such as lost profits or damages to third parties resulting from the use or inability to use the product covered by this Warranty.

Please call Superior at 800-827-3398 with any questions or claims.

Since Superior Tool is a brand of C.H. Hanson, all support is handled by qualified C.H. Hanson sales representatives. Invoicing, emails and communications are also from C.H. Hanson.



**True industrial quality tools  
for all your plumbing needs**



Pick up one of Superior Tool's many great products and feel the weight and quality. You can rest assured it's going to be what you need for the job. And you can rely on its durability - all Superior Tool products feature a lifetime guarantee.

Whether you're a professional, first-time plumber, or DIY enthusiast, using our tools gives you peace of mind your job will be finished perfectly.

We inspect each of our products to ensure the highest level of quality and craftsmanship. So go ahead, dive in, and tackle the toughest jobs quickly with confidence.

For quality, durability, and exceptional value you can trust, look to Superior Tool.

To learn more, please visit our website at:  
**[superiortool.com](https://superiortool.com)**

**MAKE IT HAPPEN™**

Superior Tool is member of C.H. Hanson's family of exceptional brands.

connect with us



Since Superior Tool is a brand of C.H. Hanson, all support is handled by qualified C.H. Hanson sales representatives. Invoicing, emails and communications are also from C.H. Hanson.

21046 - 3/22

**Superior Tool**

2000 N. Aurora Rd., Naperville, IL 60563 | 800-827-3398 | [superiortool.com](https://superiortool.com)  
2021 © Superior Tool Company / All rights reserved