

Amflo®

AIR HOSE, HOSE REELS & AIR ACCESSORIES



AIR ACCESSORIES



TRU-FLATE®

CONTENTS

Air Hose Assemblies.....	3
Pneumatic Air Hose Reels	10
Plug & Coupler Features & Innovation.....	12
Plugs & Couplers	16
Inflator Gauges.....	30
Air Line Chucks.....	32
Blowguns	34
Hose Fittings.....	40
Air Tools and Accessories	44
Air Line Hook-Up Diagram	46
Tru-Flate Filters, Regulators & Lubricators.....	48
In-Line Air Tools	51
Amflo Filters, Regulators & Lubricators	53
Air Accessories.....	56
Hose Crimpers & Ferrules	59



~ PREMIUM ~ AIR HOSES

FROM
Amflo



K6™

**K6™ 600 PSI HIGH PRESSURE
AIR HOSE 50' X 1/4"**

- A hybrid cover allows the hose to be flexible and lay flat while the strong inner braid gives the k6 its high pressure ability
- Heavy-duty bend restrictors for increased hose life
- 1/4" MNPT in-line and ball swivel fittings
- Temp range: -40 to 150 degrees F
- Net weight: 3.3 lbs.
- 4 year warranty

566-50

VERSAFLEX™

VERSAFLEX™ HYBRID AIR HOSE 50' X 3/8"

- Extreme Flexibility
- Heavy-duty spiral bend restrictors
- 1/4" NPT fittings
- 300 PSI Working Pressure
- -40 to 140 degrees F
- Kink Resistant
- Lays Flat
- 4 year warranty

561-50A



Amflo®

ultra
air®

- High performance flexibility, even in extreme cold
- Lightweight enhanced maneuvering
- Lays flat, kink resistant under pressure
- Premium bend restrictors to extend hose life
- Temperature range: -40°F to 150°F
- Three year warranty

Ultra Air® Hybrid Air Hose

Part No.	Hose Diam.	Hose Length	Working Pressure	Hose Color	Fittings Size	Extras
572-25	1/4"	25'	300 PSI	Yellow	1/4" MNPT	Premium Bend Restrictors
572-50	1/4"	50'	300 PSI	Yellow	1/4" MNPT	Premium Bend Restrictors
572-100	1/4"	100'	300 PSI	Yellow	1/4" MNPT	Premium Bend Restrictors
575-25A	3/8"	25'	300 PSI	Yellow	1/4" MNPT	Premium Bend Restrictors
575-35A	3/8"	35'	300 PSI	Yellow	1/4" MNPT	Premium Bend Restrictors
575-50A	3/8"	50'	300 PSI	Yellow	1/4" MNPT	Premium Bend Restrictors
575-100A	3/8"	100'	300 PSI	Yellow	1/4" MNPT	Premium Bend Restrictors
573-50A	1/2"	50'	300 PSI	Yellow	3/8" MNPT	Premium Bend Restrictors
573-100A	1/2"	100'	300 PSI	Yellow	3/8" MNPT	Premium Bend Restrictors

HOSE MATERIAL	LIGHT WEIGHT	COLD WEATHER FLEXIBILITY	RESISTS TWISTING	NON-MARRING
Hybrid	<div><div></div><div></div></div>	<div><div></div><div></div></div>	<div><div></div><div></div></div>	<div><div></div><div></div></div>

GoodVery GoodExcellent



WARNING: KEEP OUT OF REACH OF CHILDREN. This product is designed for use on regulated compressed air lines or on air compressors where pressure does not exceed 300 PSI. Do not exceed the pressure limitation of the hose and/or air operated devices being used. Failure to follow these specifications and directions exactly may result in personal injury and/or property damage.

RUBBER AIR HOSE

Amflo®

Rubber Air Hose

Amflo® Rubber Air Hose is ideal for rugged applications where hoses may be dragged over concrete or other rough surfaces. The rubber construction offers very good cold weather flexibility and coils easily for storage. It is ideal for garage, shop, industry, home and many other uses. Temperature Range: -20°F to 165°F. Three year warranty.

Part No.	Hose Diam.	Hose Length	Working Pressure	Hose Color	Fittings Size	Extras
512-25E	1/4"	25'	300 PSI	Red	1/4" MNPT	N/A
512-50E	1/4"	50'	300 PSI	Red	1/4" MNPT	N/A
552-25AE	3/8"	25'	300 PSI	Red	1/4" MNPT	Bend Restrictors
552-35AE	3/8"	35'	300 PSI	Red	1/4" MNPT	Bend Restrictors
552-50AE	3/8"	50'	300 PSI	Red	1/4" MNPT	Bend Restrictors

HOSE MATERIAL	LIGHT WEIGHT	COLD WEATHER FLEXIBILITY	RESISTS TWISTING	NON-MARRING
Rubber	<div><div></div><div></div></div>	<div><div></div><div></div></div>	<div><div></div><div></div></div>	<div><div></div><div></div></div>

GoodVery GoodExcellent

Heavy Duty Rubber Air Hose

Amflo Heavy Duty Rubber Hose is ideal for the most extreme applications where air hoses are needed. Its heavy duty construction is perfect when it must be dragged over concrete or rough surfaces. The heavy duty rubber offers very good cold weather flexibility and allows for easy coiling when finished. Sunlight and chemicals have little to no effect on this heavy duty hose making it perfect for garage, shop, industry, home and many other uses. Best of all, it's Made in the USA! Temperature Range: -40°F to 210°F. Three year warranty.

Part No.	Hose Diam.	Hose Length	Working Pressure	Hose Color	Fittings Size	Extras
556-35A	3/8"	35'	300 PSI	Black	1/4" MNPT	Premium Bend Restrictors
556-50A	3/8"	50'	300 PSI	Black	1/4" MNPT	Premium Bend Restrictors

HOSE MATERIAL	LIGHT WEIGHT	COLD WEATHER FLEXIBILITY	RESISTS TWISTING	NON-MARRING
Heavy Duty Rubber	<div><div></div><div></div></div>	<div><div></div><div></div></div>	<div><div></div><div></div></div>	<div><div></div><div></div></div>

GoodVery GoodExcellent



WARNING: KEEP OUT OF REACH OF CHILDREN. This product is designed for use on regulated compressed air lines or on air compressors where pressure does not exceed 300 PSI. Do not exceed the pressure limitation of the hose and/or air operated devices being used. Failure to follow these specifications and directions exactly may result in personal injury and/or property damage.



POLYURETHANE & PVC AIR HOSE

Amflo



Features Field Repairable Ends



Polyurethane Air Hose

The light weight of polyurethane hose makes it ideal for applications where dragging a heavy hose is an issue, like roofing. The smooth, non-marring finish also makes it ideal for indoor trim work where scratching surfaces could create damage. Maintains very good cold weather flexibility. Swivel end fittings reduce hose twist and heavy-duty molded bend restrictors reduce kinking and help increase the life of the hose. Temperature Range: -30°F to 150°F. Four year warranty.

Part No.	Hose Diam.	Hose Length	Working Pressure	Hose Color	Fittings Size	Extras
12-25E	1/4"	25'	300 PSI	Blue	1/4" MNPT	Swivel Fittings, Bend Restrictors
12-50E	1/4"	50'	300 PSI	Blue	1/4" MNPT	Swivel Fittings, Bend Restrictors
12-100E	1/4"	100'	300 PSI	Blue	1/4" MNPT	Swivel Fittings, Bend Restrictors
13-50AE	3/8"	50'	300 PSI	Blue	1/4" MNPT	Swivel Fittings, Bend Restrictors
13-100AE	3/8"	100'	300 PSI	Blue	1/4" MNPT	Swivel Fittings, Bend Restrictors
14-100	1/4"	100'	300 PSI	Blue	1/4" MNPT	Field Repairable End Fittings

HOSE MATERIAL	LIGHT WEIGHT	COLD WEATHER FLEXIBILITY	RESISTS TWISTING	NON-MARRING
Poly	●	●	●	●
○ Good ● Very Good ● Excellent				

PVC Air Hose

Amflo® PVC Air Hose is ideal for general purpose applications. It features a lightweight, flexible, kink-resistant design with bend restrictors. Its bright florescent colors reduce chances of tripping while on a job site. Temperature Range: 20°F to 145°F. Two year warranty.

Part No.	Hose Diam.	Hose Length	Working Pressure	Hose Color	Fittings Size	Extras
576-25A	3/8"	25'	300 PSI	Orange	1/4" MNPT	Bend Restrictors
576-50A	3/8"	50'	300 PSI	Orange	1/4" MNPT	Bend Restrictors
576-100A	3/8"	100'	300 PSI	Orange	1/4" MNPT	Bend Restrictors
554-50A	3/8"	50'	300 PSI	Blue	1/4" MNPT	Bend Restrictors
554-100A	3/8"	100'	300 PSI	Blue	1/4" MNPT	Bend Restrictors

HOSE MATERIAL	LIGHT WEIGHT	COLD WEATHER FLEXIBILITY	RESISTS TWISTING	NON-MARRING
PVC PVC	●	○	○	●
○ Good ● Very Good ● Excellent				

WARNING: KEEP OUT OF REACH OF CHILDREN. This product is designed for use on regulated compressed air lines or on air compressors where pressure does not exceed 300 PSI. Do not exceed the pressure limitation of the hose and/or air operated devices being used. Failure to follow these specifications and directions exactly may result in personal injury and/or property damage.

RECOIL AIR HOSES

Amflo



Nylon Recoil Air Hose

Nylon Recoil Hose retains its self-coiling properties and stores itself when finished. Can be used with all air-powered equipment on the job site and in garages, plants and service stations. The swivel end fittings reduce hose twist. Temperature Range: 32°F to 120°F. One year warranty.

Part No.	Hose Diam.	Hose Length	Working Pressure	Hose Color	Fittings Size	Extras
4-12	1/4"	12'	200 PSI	Yellow	1/4" MNPT	Swivel Fittings
4-25E-RET	1/4"	25'	200 PSI	Yellow	1/4" MNPT	Swivel Fittings
4-50E-RET	1/4"	50'	200 PSI	Yellow	1/4" MNPT	Swivel Fittings
6-25	3/8"	25'	200 PSI	Yellow	3/8" MNPT	Swivel Fittings

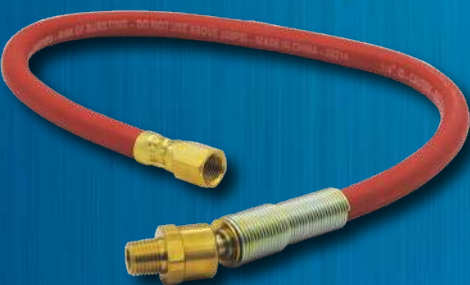
Polyurethane Recoil Air Hose

Polyurethane Recoil Hose retains its self-coiling properties and stores itself when finished. Can be used with all air-powered equipment on the job site and in garages, plants and service stations. The swivel end fittings reduce hose twist. Bend restrictors reduce kinking and increase the life of the hose. The soft polyurethane finish is less likely to scratch surfaces. Temperature Range: -30°F to 150°F. Three year warranty.

Part No.	Hose Diam.	Hose Length	Working Pressure	Hose Color	Fittings Size	Extras
24-25E-RET	1/4"	25'	120 PSI	Blue	1/4" MNPT	Swivel Fittings, Bend Restrictors
24-50E-RET	1/4"	50'	120 PSI	Blue	1/4" MNPT	Swivel Fittings, Bend Restrictors
26-25E-RET	3/8"	25'	120 PSI	Blue	1/4" MNPT	Swivel Fittings, Bend Restrictors
26-50E-RET	3/8"	50'	120 PSI	Blue	1/4" MNPT	Swivel Fittings, Bend Restrictors

WARNING: KEEP OUT OF REACH OF CHILDREN. This product is designed for use on regulated compressed air lines or on air compressors where pressure does not exceed 300 PSI. Do not exceed the pressure limitation of the hose and/or air operated devices being used. Failure to follow these specifications and directions exactly may result in personal injury and/or property damage.

BULK & LEAD-IN AIR HOSES



Bulk Air Hose

Part No.	Hose Diam.	Hose Length	Working Pressure	Hose Color	Fittings Size	Extras
Rubber Signal Bell Tubing						
494-100	3/8"	100'	200 PSI	Black	None	N/A
494-500	3/8"	500'	200 PSI	Black	None	N/A
Rubber Air Hose						
514-500	3/8"	500'	300 PSI	Red	None	N/A

Lead-In Air Hose

Lead-In Air Hoses absorb the vibrations and pulsations from air compressors and air impact tools, providing longer life for the balance of the pneumatic system. Ball swivels allow for greater flexibility and bend restrictors prevent the hose from weakening and breaking after frequent sharp bends.

Part No.	Hose Diam.	Hose Length	Working Pressure	Hose Color	Fittings Size	Extras
Rubber Lead-In Hose						
25L-24BD	1/4"	24"	300 PSI	Red	1/4" MNPT x 1/4" FNPT	Ball Swivel, Bend Restrict
Ultra Air® Hybrid Lead-In Hose						
57L-30B-RET	3/8"	30"	300 PSI	Yellow	1/4" MNPT x 1/4" FNPT	Ball Swivel, Bend Restrict
57L-48B-RET	3/8"	48"	300 PSI	Yellow	1/4" MNPT x 1/4" FNPT	Ball Swivel, Bend Restrict
57L-72B-RET	3/8"	72"	300 PSI	Yellow	1/4" MNPT x 1/4" FNPT	Ball Swivel, Bend Restrict



14-50K



576-50AK

WARNING: KEEP OUT OF REACH OF CHILDREN. This product is designed for use on regulated compressed air lines or on air compressors where pressure does not exceed 300 PSI. Do not exceed the pressure limitation of the hose and/or air operated devices being used. Failure to follow these specifications and directions exactly may result in personal injury and/or property damage.

AIR KITS / BONUS PACKS



Air Hose Kits / Bonus Packs

Part No.	Hose Diam.	Hose Length	Working Pressure	Hose Material	Hose Color	Fittings Size	Extras
10-11K	1/4"	11 1/2'	N/A	Type A Nylon	Gray	Compression Tee x 1/4" MNPT	Compression Tee to splice into Air Seat Supply Line, Blowgun with Two Nozzles
41-252	1/4"	25'	200 PSI	Nylon	Yellow	1/4" MNPT	15-Piece Kit: Safety Blowgun, 5 Tips, 1/4" Coupler, Three 1/4" Plugs, Chuck, Two Couplings, Tire Gauge
41-253	1/4"	23'	120 PSI	Poly	Blue	1/4" MNPT	14-Piece Kit: Safety Blowgun, 5 Tips, 1/4" Coupler, Three 1/4" Plugs, Chuck, Two Couplings, Tire Gauge
574-50GH	3/8"	50'	300 PSI	PVC	Red	1/4" MNPT x Glad Hand	Universal Glad-Hand Kit Dual-foot Air Chuck
575-50AGH	3/8"	50'	300 PSI	Hybrid	Yellow	1/4" MNPT x Glad Hand	Universal Glad-Hand Kit, Dual-foot Air Chuck, Premium Bend Restrictors
14-50K	1/4"	50'	300 PSI	Poly	Blue	1/4" MNPT	9-Piece Kit: Safety Blowgun, 5 Tips, 1/4" Coupler, Two 1/4" Plugs
576-50AK	3/8"	50'	300 PSI	PVC	Orange	1/4" MNPT	9-Piece Kit: Safety Blowgun, 5 Tips, 1/4" Coupler, Two 1/4" Plugs
552-50AK-5	3/8"	50'	300 PSI	Rubber	Red	1/4" MNPT	9-Piece Kit: Safety Blowgun, 5 Tips, 1/4" Coupler, Two 1/4" Plugs
580-50ACK	3/8"	50'	300 PSI	Hybrid	Gray	1/4" MNPT	5-Piece Kit: 2 HI FLO Couplers, 3 HI FLO Plugs



552-50AK-5



580-50ACK

WARNING: KEEP OUT OF REACH OF CHILDREN. This product is designed for use on regulated compressed air lines or on air compressors where pressure does not exceed 300 PSI. Do not exceed the pressure limitation of the hose and/or air operated devices being used. Failure to follow these specifications and directions exactly may result in personal injury and/or property damage.



10-11K



41-252



41-253



574-50GH



575-50AGH



588HR-RET



538HR-RET



546HR-RET

Automatic Enclosed Air Hose Reels

From DIYers to heavy-duty professionals, the Amflo® brand of automatic enclosed air hose reels has something for everyone. All reels feature impact resistant housing, guided automatic hose rewind system and a 180° steel swivel mounting bracket. The ability to be mounted vertically or horizontally allows them to fit any workspace configuration. Give consumers what they need with our Automatic Enclosed Air Hose Reels.

Part No.	Hose Diam.	Hose Length	Working Pressure	Hose Color	Fittings Size	Extras
Enclosed Ultra Air® Hybrid Air Hose Reel						
588HR-RET	3/8"	50'	300 PSI	Yellow	1/4" MNPT	Ratchet Brake, Bend Restrictors

Enclosed Ultra PRO® Hybrid Air Hose Reels

Additional features for 543HR-RET and 546HR-RET:

- Stop anywhere braking system for added convenience.
- Slow rewind spring helps retract air hose at a slower rate than most reels.
- 546HR-RET features the above, in addition to a carrying handle and quick disconnect bracket for maximum portability.

543HR-RET	3/8"	50'	300 PSI	Yellow	1/4" MNPT	Bend Restrictors
-----------	------	-----	---------	--------	-----------	------------------

Automatic Open Face Air Hose Steel Reels

Amflo open face hose reels have an all steel construction for industrial versatility. They feature a spring-wound auto-rewind mechanism and a locking ratchet brake. Can be mounted vertically or horizontally. Guide arm is adjustable to dispense hose at various angles. Ultra PRO open face reels come with robust bend restrictors for extended hose life. These open face hose reels are perfect for your heavy duty and industrial consumers.

Part No.	Hose Diam.	Hose Length	Working Pressure	Hose Color	Fittings Size	Extras
Open Face Ultra PRO® Hybrid Air Hose Reels						
507HR-RET	3/8"	25'	300 PSI	Yellow	1/4" MNPT	Bend Restrictors
508HR-RET	3/8"	50'	300 PSI	Yellow	1/4" MNPT	Bend Restrictors
518HR-RET	1/2"	50'	300 PSI	Yellow	3/8" MNPT	Bend Restrictors

Manual Air Hose Reels

Amflo manual hose reels feature all steel construction, comfortable handle grips and a spring tension brake to prevent accidental unwinding. Standard manual reels can be mounted horizontally or vertically and are unassembled without hose to take up less space on the retail shelf. The dual output manual reel sits on the ground or can be conveniently nailed to the roof for maximum maneuverability. It is perfect for the construction site as it comes with 75' of lightweight polyurethane air hose. Manual hose reels are perfect for the economical shopper in the market for an air hose reel.

Part No.	Hose Diam.	Hose Length	Working Pressure	Hose Color	Fittings Size	Extras
Manual Reel - Preamsembled						
545HR-RET	3/8"	75'	200 PSI	Gold	1/4" NPT	Dual Output Fittings, Poly Hose
Manual Reel - Unassembled						
503HR-RET	N/A	N/A	250 PSI	N/A	1/4" NPT	N/A



507HR-RET
508HR-RET
518HR-RET



545HR-RET



503HR-RET

Tru-Flate® Packaging

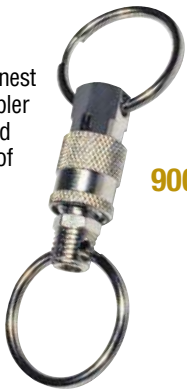
- Tru-Flate offers innovative, patented die-cut packaging to aid in the selection process.
 - Plug outline template built into card to compare profiles
 - Reduces confusion for end-user
 - Patent number 9169053
- Tire repair and air accessories packages are coordinated to give a strong, unmistakable family appearance at retail.



Coupler / Plug Key Ring

These sturdy key rings are among the finest available. Similar to 1/8" pneumatic coupler and plug sets with steel construction and heavy nickel plating. Will provide years of reliable service and security.

- 900-10 10/box.
- 900 Bulk.100/box.



Coupler / Plug Identifier

Makes coupler and plug sales easy. Gives countertermen a "surefire" way to quickly and accurately identify the proper 1/4" series plug for their coupler. Metal bar has each of four basic design plugs permanently fastened to the bar. Color-coded plugs on bar match correct coupler and plug package. Each design name is stamped in bar. Complete with handy hanger strap.

- 96-901 Coupler Test Bar. 1/bag.
- 96-902 Plug Test Bar. 1/bag.

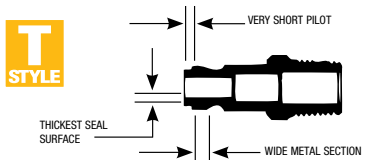


How to Identify Interchange Designs

Interchangeability of pneumatic couplings is determined by PLUG DESIGN. Learn to identify the basic plug types, and coupler and plug interchange will become easy. There are several different designs currently used in the market with I/M being the most popular at about 70% of couplers and plugs sold.

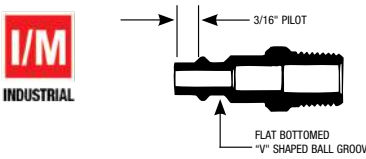
Automotive Tru-Flate Design 12/13-100 Series

This design is easily recognized because it has the shortest plug pilot in the industry; however, it has the widest metal section between the ball groove and the pilot. In addition, the sealing surface on the end of the plug is wider than other "interchange" designs. This design provides better sealing characteristics and longer seal life.



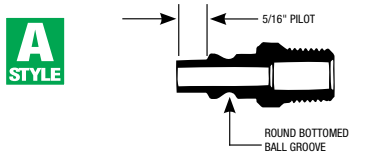
Industrial Milton Design 12/13-200 Series

This design has been adopted by many coupler manufacturers, including Milton, Hansen, ARO, Lincoln and Schrader. It will work with either "sleeve" type or "push" type couplers. There are several different designs currently used in the market with I/M being the most popular at about 70% of couplers and plugs sold.



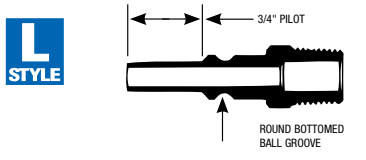
Automotive ARO Design 12/13-300 Series

This design is characteristic of the ARO 210 series, and requires a coupler of proper matching design. Although similar in appearance to the "Industrial/Milton Interchange" design, it can be easily distinguished because its pilot is 1/8" longer and its ball groove is nearly round.



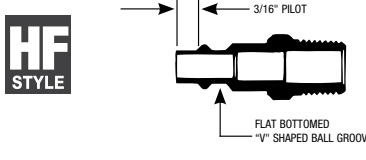
Lincoln Design 12/13-400 Series

The "Lincoln long-stem" design is the most easily identified design. The long 3/4" pilot is so distinctive it cannot be confused with other designs. It will only mate with couplers of matching design and size.

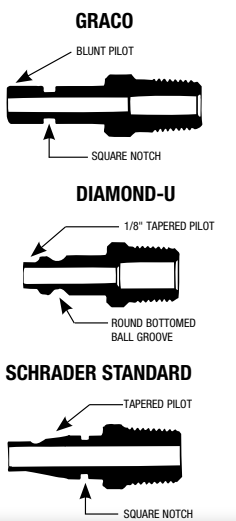


HI FLO Design 12/13-900 Series

The HI FLO design has a similar profile to the I/M design, but has a much wider opening to allow almost three times the air flow. HI FLO plugs will not work with any other coupler design, but the HI FLO couplers will work with a small leak with some of the standard coupler designs if the need should arise.



Other Designs



How to Interchange Couplers and Plugs

Design Selection

Similar name designs, whether manufactured by Amflo, Tru-Flate or a competitor, are interchangeable. NOTE: Designs are not interchangeable with other designs.

Size Selection

There are three BODY SERIES sizes – Standard 1/4" and Heavy Duty 3/8" and 1/2". To interchange, the coupler and plug must have the same body size.

CFM FLOW REQUIREMENTS

TRU-FLATE® Amflo®

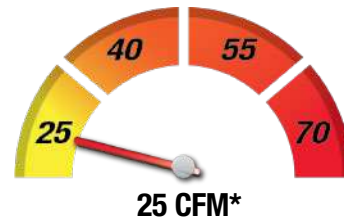
CHOOSE THE RIGHT COUPLER & PLUG FOR YOUR APPLICATION

Standard Couplers & Plugs

- Steel is suitable for indoor use or in dry conditions
- Brass is suitable for indoor or outdoor use
 - Resists rust & corrosion in damp conditions

Best Used For:

- DIY / Homeowner
 - Shop inflation
 - Air guns for cleanup of floors / workbenches



Tru-Match® Couplers & Plugs

- Aluminum is suitable for indoor or outdoor use
- Perfect for consumers who need to keep air lines separated

Best Used For:

- DIY / Homeowner / Semi-Professional
 - Air tools & nailers
 - Paint guns & sanders

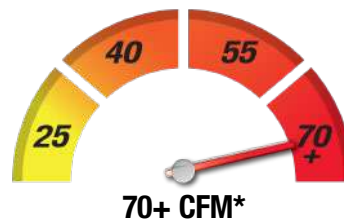


HI FLO® Couplers & Plugs

- Aluminum is suitable for indoor or outdoor use
- Perfect for consumers who require a higher amount of air flow

Best Used For:

- Professionals / Shops
 - Air tools & nailers
 - Air guns
 - Paint & body tools



* all CFM flow values were tested using 90 PSI

Prevents Accidental Disconnect Protection

All Amflo and Tru-Flate couplers come with a sleeve guard that reduces the potential for accidental disconnect caused by snags or tight work spaces. It also has the added benefit of protecting the sleeve under the toughest working conditions.



HI FLO® & TRU-MATCH® AIR FITTINGS

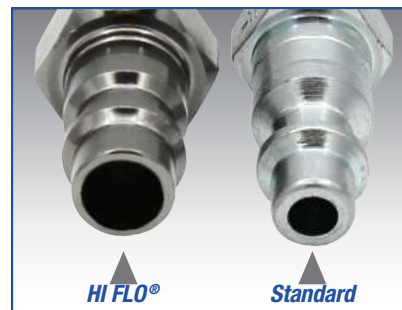
TRU-FLATE® Amflo®

TRU-FLATE® HI FLO® COUPLERS & PLUGS



- Increased flow ensures your tools will provide maximum torque and optimal performance.
- Push-to-connect design for quick easy connections.
- Durable lightweight T6 aluminum construction
- Corrosion resistant with stainless steel ball bearings.

**Let Your Customers
Unleash The
Full Power
Of Their
Air Tools!**



Allow consumers to replace their fittings, not their hose.

TRU-FLATE® TRU-MATCH® COUPLERS & PLUGS

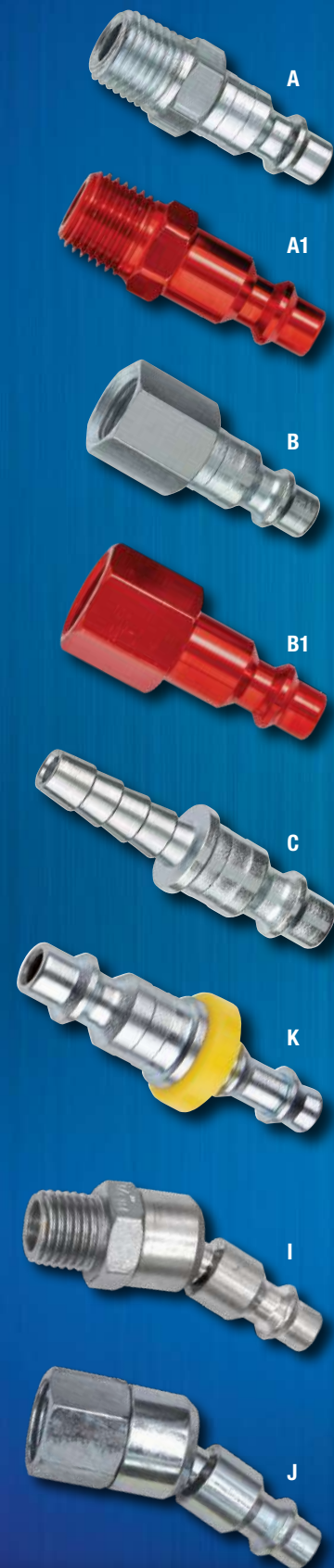
- Push-to-connect design for quick easy connections.
- Couplers allow increased air flow compared to 25 CFM standard couplers.
- Durable lightweight T6 aluminum construction.
- Color-code lubricated vs dry lines to prevent cross contamination.



**INCREASED
AIR FLOW**



PLUGS & COUPLERS



I/M Industrial Design

Adopted by most coupler manufacturers, this plug design is considered the industrial standard. It can be identified by the 3/16" pilot and flat bottom V-shaped ball groove. Conforms to ANSI (NFPA) T3.20.14-1990 dimensions. Couplers are available in both standard and push-to-connect style sleeve.

Thread	NPT	Style	Metal	Tru-Flate	Quantity	Amflo	Quantity
1/4" Body Series – Plugs							
Male	1/4"	A	Steel	12-224	—	CP21	10/box
Male	1/4"	A	Steel	—	—	CP21-100	100/box
Male	1/4"	A	Steel	12-225	10/master*	—	—
Male	1/4"	A	Steel	12-225-2 ²	10/master*	—	—
Swivel M	1/4"	I	Steel	12-223	10/master*	—	—
Male	1/4"	A	Brass	—	—	CP21B	10/box
Male	1/4"	A	Brass	—	—	CP21B-100	100/box
Male	1/4"	A1	Aluminum	12-224R	10/box	—	—
Male	3/8"	A	Steel	—	—	CP21-03	10/box
Male	3/8"	A	Steel	12-227	10/master*	—	—
Female	1/4"	B	Steel	—	—	CP20	10/box
Female	1/4"	B	Steel	—	—	CP20-100	100/box
Female	1/4"	B	Steel	12-235	10/master*	—	—
Female	1/4"	B	Steel	12-235-2 ²	10/master*	—	—
Swivel F	1/4"	J	Steel	12-233	10/master*	—	—
Female	1/4"	B	Brass	—	—	CP20B	10/box
Female	1/4"	B	Brass	—	—	CP20B-100	100/box
Female	1/4"	B1	Aluminum	12-234R	10/box	—	—
Female	3/8"	B	Steel	—	—	CP20-23	10/box
Female	3/8"	B	Steel	12-237	10/master*	—	—
Female	.307-32"	B	Steel	—	—	CP22	10/box
Hose Barb	1/4"	C	Steel	—	—	CP21-42	10/box
Hose Barb	1/4"	C	Steel	—	—	CP21-42-100	100/box
Hose Barb	3/8"	C	Steel	—	—	CP21-44	10/box
Hose Barb	3/8"	C	Steel	—	—	CP21-44-100	100/box
Lock-On	1/4"	K	Steel	—	—	CP21-42L	10/box
Lock-On	3/8"	K	Steel	—	—	CP21-44L	10/box

* - Carded display package
2 - Two pack on a carded display package

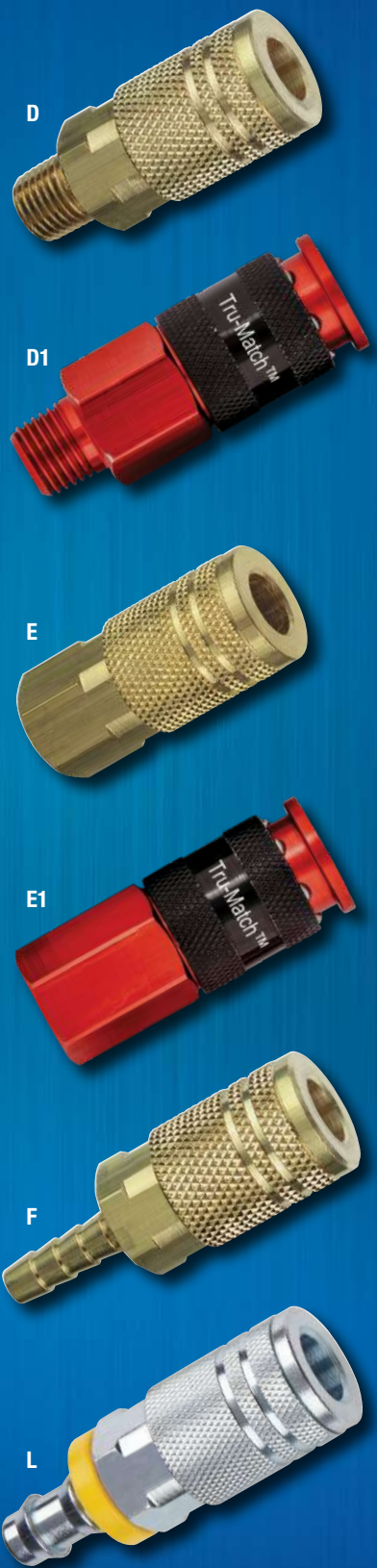
PLUGS & COUPLERS



I/M Industrial Design

Thread	NPT	Style	Metal	Tru-Flate	Quantity	Amflo	Quantity
1/4" Body Series – Couplers							
Male	1/4"	D	Steel	—	—	C21	10/box
Male	1/4"	D	Steel	—	—	C21-100	100/box
Male	1/4"	D	Brass	—	—	C21B	10/box
Male	1/4"	D	Brass	—	—	C21B-100	100/box
Male	1/4"	D	Brass	13-225	10/master*	—	—
Male	1/4"	D1	Aluminum	13-224R	10/box	—	—
Male	3/8"	D	Steel	—	—	C21-03	10/box
Male	3/8"	D	Brass	—	—	C21-03B	10/box
Male	3/8"	D	Brass	—	—	C21-03B-100	100/box
Male	3/8"	D	Brass	13-227	10/master*	—	—
Female	1/4"	E	Steel	—	—	C20	10/box
Female	1/4"	E	Steel	—	—	C20-100	100/box
Female	1/4"	E	Brass	—	—	C20B	10/box
Female	1/4"	E	Brass	—	—	C20B-100	100/box
Female	1/4"	E	Brass	13-235	10/master*	—	—
Female	1/4"	E1	Aluminum	13-234R	10/box	—	—
Female	3/8"	E	Steel	—	—	C20-23	10/box
Female	3/8"	E	Steel	—	—	C20-23-100	100/box
Female	3/8"	E	Brass	—	—	C20-23B	10/box
Female	3/8"	E	Brass	13-237	10/master*	—	—
Hose Barb	1/4"	F	Steel	—	—	C20-42	10/box
Hose Barb	1/4"	F	Steel	—	—	C20-42-100	100/box
Hose Barb	1/4"	F	Brass	—	—	C20-42B	10/box
Hose Barb	3/8"	F	Steel	—	—	C20-44	10/box
Hose Barb	3/8"	F	Steel	—	—	C20-44-100	100/box
Hose Barb	3/8"	F	Brass	—	—	C20-44B	10/box
Lock-On	1/4"	L	Steel	—	—	C20-42L	10/box
Lock-On	1/4"	L	Brass	—	—	C20-42LBP-100	100/box
Lock-On	3/8"	L	Steel	—	—	C20-44L	10/box
Lock-On	3/8"	L	Brass	—	—	C20-44LBP-100	100/box

*Carded display package



WARNING: Due to their large size, these couplers should not be connected or disconnected if the line pressure exceeds 40 PSI.
WARNING: Couplers and plugs are intended for use on compressed air lines only. All have maximum rated working pressure of 300 PSI.

PLUGS & COUPLERS



I/M Industrial Design

Thread	NPT	Style	Metal	Tru-Flate	Quantity	Amflo	Quantity
Plug/Coupler Sets / Kits							
One each of 12-225 and 13-235				13-201	10/master*	—	—
One each of 12-225, 12-235, 13-235 and 21-505				13-203	5/master*	—	—
One each 13-234R, 12-224R, and 12-234R				13-207R	10/master*	—	—
One 13-224R, One 13-234R, Two 12-234R, and Three 12-224R				13-209R	10/master*	—	—



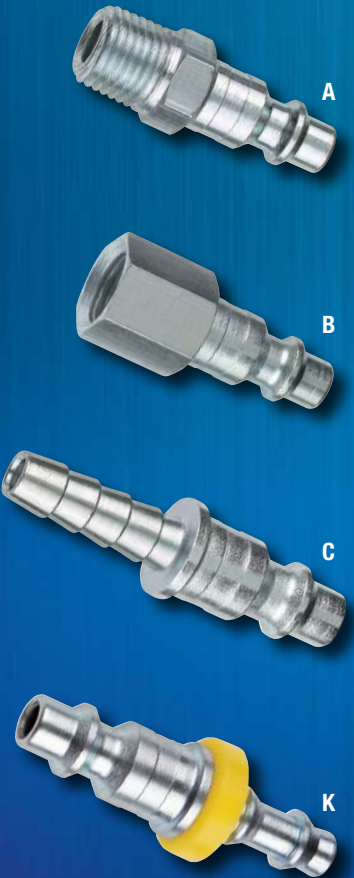
13-209R

Thread	NPT	Style	Metal	Tru-Flate	Quantity	Amflo	Quantity
3/8" Body Series – Plugs							
Male	1/4"	A	Steel	12-525	—	CP25-02	10/box
Male	1/4"	A	Steel	—	—	CP25-02-100	100/box
Male	1/4"	A	Steel	12-523	5/master*	—	—
Male	3/8"	A	Steel	—	—	CP25	10/box
Male	3/8"	A	Steel	—	—	CP25-50	50/box
Male	3/8"	A	Steel	12-527	5/master*	—	—
Male	1/2"	A	Steel	—	—	CP25-04	10/box
Female	1/4"	B	Steel	—	—	CP26-22	10/box
Female	3/8"	B	Steel	—	—	CP26	10/box
Female	3/8"	B	Steel	12-537	5/master*	—	—
Female	1/2"	B	Steel	—	—	CP26-24	10/box
Hose Barb	3/8"	C	Steel	—	—	CP25-44	10/box
Hose Barb	1/2"	C	Steel	—	—	CP25-45	10/box
Lock-On	3/8"	K	Steel	—	—	CP25-44L	10/box

*Carded display package



13-203



A

B

C

K



I/M Industrial Design

Thread	NPT	Style	Metal	Tru-Flate	Quantity	Amflo	Quantity
3/8" Body Series – Couplers							
Male	1/4"	D	Steel	—	—	C25-02	10/box
Male	3/8"	D	Steel	—	—	C25	10/box
Male	3/8"	D	Steel	—	—	C25-50	50/box
Male	3/8"	D	Steel	13-527	5/master*	—	—
Female	1/4"	E	Steel	—	—	C26-22	10/box
Female	3/8"	E	Steel	—	—	C26	10/box
Female	3/8"	E	Steel	—	—	C26-50	50/box
Female	3/8"	E	Steel	13-537	5/master*	—	—
Female	1/2"	E	Steel	—	—	C26-24	10/box
Hose Barb	3/8"	F	Steel	—	—	C26-44	10/box
Hose Barb	1/2"	F	Steel	—	—	C26-45	10/box
Lock-On	3/8"	L	Steel	—	—	C26-44L	10/box

1/2" Body Series – Plugs							
Male	3/8"	A	Steel	—	—	CP17-03	10/box
Male	1/2"	A	Steel	—	—	CP17	10/box
Female	3/8"	B	Steel	—	—	CP18-23	10/box
Female	1/2"	B	Steel	—	—	CP18	10/box
Hose Barb	1/2"	C	Steel	—	—	CP17-45	10/box
1/2" Body Series – Couplers							
Male	3/8"	D	Steel	—	—	C9-03	10/box
Male	1/2"	D	Steel	—	—	C9	10/box
Male	1/2"	D	Steel	—	—	C9-50	50/box
Male	1/2"	D	Steel	13-705	5/master*	—	—
Female	3/8"	E	Steel	—	—	C10-23	10/box
Female	1/2"	E	Steel	—	—	C10	10/box
Female	1/2"	E	Steel	—	—	C10-50	50/box
Female	1/2"	E	Steel	13-713	5/master*	—	—
Hose Barb	1/2"	F	Steel	—	—	C10-45	10/box

*Carded display package



D



E



F



L



A



B



C

WARNING: Due to their large size, these couplers should not be connected or disconnected if the line pressure exceeds 40 PSI.
WARNING: Couplers and plugs are intended for use on compressed air lines only. All have maximum rated working pressure of 300 PSI.

PLUGS & COUPLERS

TRU-FLATE® Amflo®



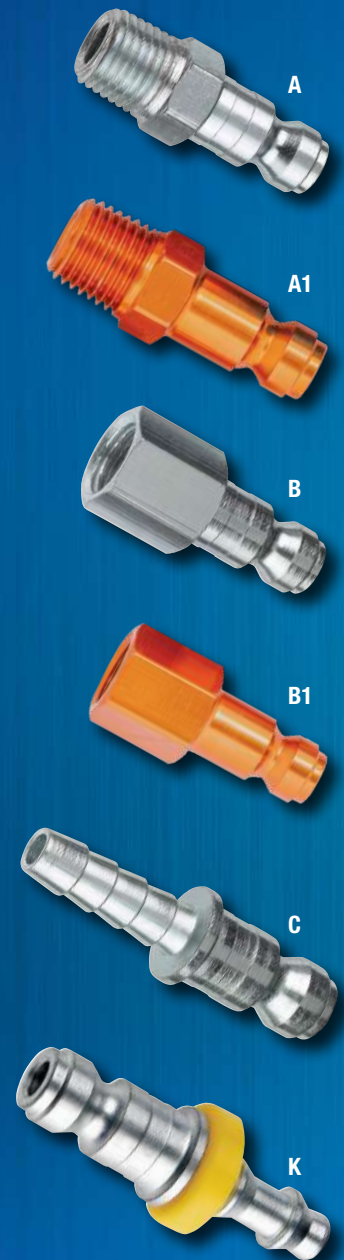
T-Style® Design

The Tru-Flate Design Plug is recognized by the extremely short pilot; however, it has the widest metal section between the groove and the pilot. The sealing surface on the end of the plug is wider than other interchanges, resulting in better sealing and longer seal life. The Tru-Flate Design Coupler utilizes the tubular valve which supports the seal and allows more air flow at lower pressure drops than most competitive couplers. Couplers are available in both standard and push-to-connect style sleeve.

Thread	NPT	Style	Metal	Tru-Flate	Quantity	Amflo	Quantity
1/4" Body Series – Plugs							
Male	1/4"	A	Steel	—	—	CP1	10/box
Male	1/4"	A	Steel	—	—	CP1-100	100/box
Male	1/4"	A	Steel	12-125	10/master*	—	—
Male	1/4"	A	Steel	12-125-2 ²	10/master*	—	—
Male	1/4"	A	Brass	—	—	CP1B	10/box
Male	1/4"	A1	Aluminum	12-124B	10/box	—	—
Male	3/8"	A	Steel	—	—	CP1-03	10/box
Male	.307-32"	A	Steel	—	—	CP1-302	10/box
Female	1/4"	B	Steel	—	—	CP2	10/box
Female	1/4"	B	Steel	—	—	CP2-100	100/box
Female	1/4"	B	Steel	12-135	10/master*	—	—
Female	1/4"	B	Steel	12-135-2 ²	10/master*	—	—
Female	1/4"	B	Brass	—	—	CP2B	10/box
Female	1/4"	B1	Aluminum	12-134B	10/box	—	—
Female	3/8"	B	Steel	—	—	CP2-23	10/box
Hose Barb	1/4"	C	Steel	—	—	CP1-42	10/box
Hose Barb	3/8"	C	Steel	—	—	CP1-44	10/box
Lock-On	1/4"	K	Steel	—	—	CP1-42L	10/box
Lock-On	3/8"	K	Steel	—	—	CP1-44L	10/box

* - Carded display package

² - Two pack on a carded display package



PLUGS & COUPLERS

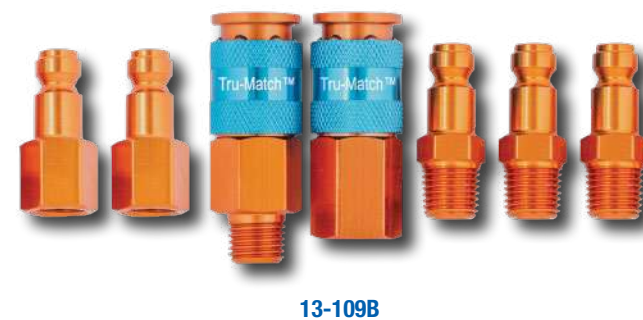
TRU-FLATE® Amflo®



T-Style® Design

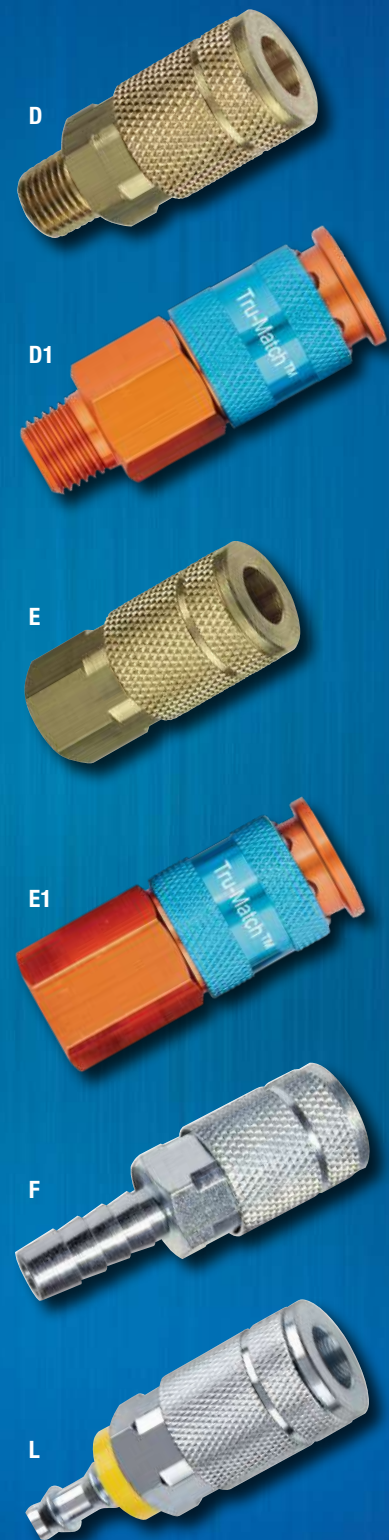
Thread	NPT	Style	Metal	Tru-Flate	Quantity	Amflo	Quantity
1/4" Body Series – Couplers							
Male	1/4"	D	Steel	—	—	C1	10/box
Male	1/4"	D	Steel	—	—	C1-100	100/box
Male	1/4"	D	Brass	—	—	C1B-100	100/box
Male	1/4"	D	Brass	13-125	10/master*	—	—
Male	1/4"	D1	Aluminum	13-124B	10/box	—	—
Male	3/8"	D	Steel	—	—	C1-03	100/box
Female	1/4"	E	Steel	—	—	C2	10/box
Female	1/4"	E	Steel	—	—	C2-100	100/box
Female	1/4"	E	Brass	—	—	C2B	10/box
Female	1/4"	E	Brass	—	—	C2B-100	100/box
Female	1/4"	E	Brass	13-135	10/master*	—	—
Female	1/4"	E1	Aluminum	13-134B	10/box	—	—
Female	3/8"	E	Steel	—	—	C2-23	10/box
Hose Barb	1/4"	F	Steel	—	—	C2-42	10/box
Hose Barb	3/8"	F	Steel	—	—	C2-44	10/box
Lock-On	1/4"	L	Steel	—	—	C2-42L	10/box
Lock-On	3/8"	L	Steel	—	—	C2-44L	10/box
Plug/Coupler Set							
One each 13-135 and 12-125				13-101	10/master*	—	—
One each 13-134B, 12-124B, and 12-134B				13-107B	10/master*	—	—
One 13-124B, One 13-134B, Two 12-134B, and Three 12-124B				13-109B	10/master*	—	—

* - Carded display package



13-109B

WARNING: Due to their large size, these couplers should not be connected or disconnected if the line pressure exceeds 40 PSI.
WARNING: Couplers and plugs are intended for use on compressed air lines only. All have maximum rated working pressure of 300 PSI.



PLUGS & COUPLERS



T-Style® Design

Thread	NPT	Style	Metal	Tru-Flate	Quantity	Amflo	Quantity
3/8" Body Series – Plugs							
Male	1/4"	A	Steel	12-602	—	CP7	10/box
Male	1/4"	A	Steel	—	—	CP7-50	50/box
Male	1/4"	A	Steel	12-603	10/master*	—	—
Male	1/4"	A	Steel	12-603-2 ²	10/master*	—	—
Male	3/8"	A	Steel	—	—	CP5	10/box
Male	3/8"	A	Steel	—	—	CP5-50	50/box
Male	3/8"	A	Steel	12-605	10/master*	—	—
Male	1/2"	A	Steel	—	—	CP5-04	10/box
Female	1/4"	B	Steel	—	—	CP8	10/box
Female	1/4"	B	Steel	—	—	CP8-50	50/box
Female	1/4"	B	Steel	12-611	10/master*	—	—
Female	3/8"	B	Steel	—	—	CP6	10/box
Female	3/8"	B	Steel	12-613	10/master*	—	—
Female	1/2"	B	Steel	—	—	CP6-24	10/box
Hose Barb	3/8"	C	Steel	—	—	CP5-44	10/box
3/8" Body Series – Couplers							
Male	1/4"	D	Steel	—	—	C7	10/box
Male	1/4"	D	Steel	—	—	C7-50	50/box
Male	1/4"	D	Steel	13-603	5/master*	—	—
Male	3/8"	D	Steel	—	—	C5	10/box
Male	3/8"	D	Steel	—	—	C5-50	50/box
Male	3/8"	D	Brass	13-605	5/master*	—	—
Male	1/2"	D	Steel	—	—	C5-04	10/box
Female	1/4"	E	Steel	—	—	C8	10/box
Female	1/4"	E	Steel	—	—	C8-50	50/box
Female	1/4"	E	Steel	13-611	5/master*	—	—
Female	3/8"	E	Steel	—	—	C6	10/box
Female	3/8"	E	Steel	—	—	C6-50	50/box
Female	3/8"	E	Steel	13-613	5/master*	—	—
Female	1/2"	E	Steel	—	—	C6-24	10/box
Hose Barb	3/8"	F	Steel	—	—	C6-44	10/box
Hose Barb	1/2"	F	Steel	—	—	C6-45	10/box

* - Carded display package
2 - Two pack on a carded display package

PLUGS & COUPLERS



T-Style® Design

Thread	NPT	Style	Metal	Tru-Flate	Quantity	Amflo	Quantity
1/2" Body Series – Plugs							
Male	3/8"	A	Steel	—	—	CP9-03	10/box
Male	1/2"	A	Steel	—	—	CP9	10/box
Male	1/2"	A	Steel	12-705	10/master*	—	—
Female	3/8"	B	Steel	—	—	CP10-23	10/box
Female	1/2"	B	Steel	—	—	CP10	10/box
Female	1/2"	B	Steel	—	—	CP10-50	50/box
Female	1/2"	B	Steel	12-713	5/master*	—	—
1/2" Body Series – Couplers							
Male	3/8"	D	Steel	—	—	C9-03	10/box
Male	1/2"	D	Steel	—	—	C9	10/box
Male	1/2"	D	Steel	—	—	C9-50	50/box
Male	1/2"	D	Steel	13-705	5/master*	—	—
Female	3/8"	E	Steel	—	—	C10-23	10/box
Female	1/2"	E	Steel	—	—	C10	10/box
Female	1/2"	E	Steel	—	—	C10-50	50/box
Female	1/2"	E	Steel	13-713	5/master*	—	—
Hose Barb	1/2"	F	Steel	—	—	C10-45	10/box
Recappers – Plugs							
Female	.307-32"	—	Steel	—	—	CP12	10/box
Recappers – Couplers							
Female	1/4"	—	Steel	—	—	C2R	10/box

*Carded display package

WARNING: Due to their large size, these couplers should not be connected or disconnected if the line pressure exceeds 40 PSI.
WARNING: Couplers and plugs are intended for use on compressed air lines only. All have maximum rated working pressure of 300 PSI.

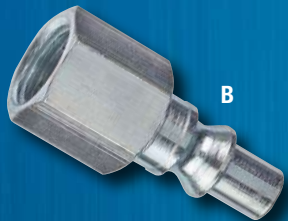


A-Style Design

This design is identified by a 5/16" pilot and ball groove which is nearly round. It is similar in appearance to the Industrial interchange and care must be taken to correctly identify it. Couplers are available in both standard and push-to-connect style sleeve.

Thread	NPT	Style	Metal	Tru-Flate	Quantity	Amflo	Quantity
1/4" Body Series – Plugs							
Male	1/4"	A	Steel	12-324	–	CP37	10/box
Male	1/4"	A	Steel	–	–	CP37-100	100/box
Male	1/4"	A	Steel	12-325	10/master*	–	–
Male	1/4"	A	Steel	12-325-2 ²	10/master*	–	–
Male	3/8"	A	Steel	–	–	CP37-03	10/box
Female	1/4"	B	Steel	–	–	CP38	10/box
Female	1/4"	B	Steel	–	–	CP38-100	100/box
Female	1/4"	B	Steel	12-335	10/master*	–	–
Female	1/4"	B	Steel	12-335-2 ²	10/master*	–	–
Female	3/8"	B	Steel	–	–	CP38-23	10/box
Hose Barb	1/4"	C	Steel	–	–	CP37-42	10/box
Lock-On	3/8"	K	Steel	–	–	CP37-44L	10/box
Plug/Coupler Sets							
One each of Tru-Flate 12-325 and 13-335				13-301	10/master*	–	–
One each 13-334G, 12-324G, and 12-334G				13-307G	10/master*	–	–
One 13-324G, One 13-334G, Two 12-334G, and Three 12-324G				13-309G	10/master*	–	–

* - Carded display package
2 - Two pack on a carded display package



A-Style Design

Thread	NPT	Style	Metal	Tru-Flate	Quantity	Amflo	Quantity
1/4" Body Series – Couplers							
Male	1/4"	D	Steel	–	–	C37	10/box
Male	1/4"	D	Steel	–	–	C37-100	100/box
Male	1/4"	D	Brass	13-324	10/box	–	–
Male	1/4"	D	Brass	13-325	10/master*	–	–
Male	3/8"	D	Steel	–	–	C37-03	10/box
Female	1/4"	E	Steel	–	–	C38	10/box
Female	1/4"	E	Steel	–	–	C38-100	100/box
Female	1/4"	E	Brass	13-334	10/box	–	–
Female	1/4"	E	Brass	13-334-07	100/box	–	–
Female	1/4"	E	Brass	13-335	10/master*	–	–
Female	3/8"	E	Steel	–	–	C38-23	10/box
Hose Barb	1/4"	F	Steel	–	–	C38-42	10/box
Hose Barb	3/8"	F	Steel	–	–	C38-44	10/box
1/4" Push Couplers							
Female	1/4"	H	Steel	–	–	C46	10/box
Female	1/4"	H	Steel	13-775	10/master*	–	–
3/8" Body Series – Plugs							
Male	3/8"	A	Steel	–	–	CP35	10/box
Female	3/8"	B	Steel	–	–	CP36	10/box
3/8" Body Series – Couplers							
Male	3/8"	D	Steel	–	–	C35	10/box
Female	3/8"	E	Steel	–	–	C36	10/box

*Carded display package



WARNING: Due to their large size, these couplers should not be connected or disconnected if the line pressure exceeds 40 PSI.
WARNING: Couplers and plugs are intended for use on compressed air lines only. All have maximum rated working pressure of 300 PSI.

PLUGS & COUPLERS

TRU-FLATE® Amflo®



L-Style Design

This plug is the most easily recognized design. The long 3/4" pilot is so distinctive it cannot be confused with any other designs. Couplers are available in sleeve type only.

Thread	NPT	Style	Metal	Tru-Flate	Quantity	Amflo	Quantity
1/4" Body Series – Plugs							
Male	1/4"	A	Steel	–	–	CP27	10/box
Male	1/4"	A	Steel	–	–	CP27-100	100/box
Male	1/4"	A	Steel	12-425	10/master*	–	–
Female	1/4"	B	Steel	–	–	CP28	10/box
Female	1/4"	B	Steel	–	–	CP28-100	100/box
Female	1/4"	B	Steel	12-435	10/master*	–	–
1/4" Body Series – Couplers							
Male	1/4"	D	Steel	13-424	10/box	–	–
Male	1/4"	D	Steel	13-425	10/master*	–	–
Female	1/4"	E	Steel	13-434	10/box	–	–
Female	1/4"	E	Steel	–	–	C28-100	100/box
Female	1/4"	E	Steel	13-435	10/master*	–	–
Plug/Coupler Set							
One each of 12-425 and 13-435				13-401	10/master*	–	–



HI FLO® Design

HI FLO® couplers and plugs are specifically designed for use in HVLP (High Volume, Low Pressure) situations, such as paint spray guns, abrasive blast cabinets and high cfm air tools. HI FLO® couplers and plugs can allow up to 70+ CFM of air flow, almost three times the air flow of standard couplers and plugs.

Thread	NPT	Style	Metal	Tru-Flate	Quantity	Amflo	Quantity
HI FLO® Series – Plugs							
Male	1/4"	F	Steel	–	–	CP91	10/box
Male	1/4"	F	Steel	–	–	CP91-100	100/box
Male	1/4"	H	Aluminum	12-924	10/box	–	–
Male	1/4"	H	Aluminum	12-925 ²	10/master*	–	–
Female	1/4"	G	Steel	–	–	CP90	10/box
Female	1/4"	G	Steel	–	–	CP90-100	100/box
Female	1/4"	I	Aluminum	12-934	10/box	–	–
Female	1/4"	I	Aluminum	12-935 ²	10/master*	–	–

* - Carded display package
2 - Two pack on a carded display package

PLUGS & COUPLERS

TRU-FLATE® Amflo®



HI FLO® Design

Thread	NPT	Style	Metal	Tru-Flate	Quantity	Amflo	Quantity
HI FLO® Series – Swivel Plug							

Swivel Plugs Feature:

- Increased flow ensures your tools will provide maximum torque and optimal performance.
- 360° swivel helps air hose from kinking.
- Made with lightweight aluminum reducing user fatigue.

Male	1/4"	A	Aluminum	12-929	10/master*	–	–
HI FLO® Series – Brass Push-To-Connect Couplers							

Brass Push-To-Connect Couplers Feature:

- Durable heavy duty brass construction.
- 50 CFM compared to 25 CFM of standard couplers.

Male	1/4"	B	Brass	–	–	C91	10/box
Male	1/4"	B	Brass	–	–	C91-100	100/box
Female	1/4"	C	Brass	–	–	C90	10/box
Female	1/4"	C	Brass	–	–	C90-100	100/box

HI FLO® Series – Aluminum Push-To-Connect Couplers							
--	--	--	--	--	--	--	--

Aluminum Push-To-Connect Couplers Feature:

- Lightweight T6 aluminum construction.
- Extreme corrosion resistance: stainless steel ball bearings, spring and valve.
- 70+ CFM, almost three times the air flow of standard couplers.

Male	1/4"	D	Aluminum	13-924	10/box	–	–
Male	1/4"	D	Aluminum	13-925	10/master*	–	–
Female	1/4"	E	Aluminum	13-934	10/box	–	–
Female	1/4"	E	Aluminum	13-935	10/master*	–	–

Plug/Coupler Sets							
One 13-934, One 12-934, and Two 12-924				13-903	10/master*	–	–
One 13-924, Two 13-934, Three 12-934, and Four 12-924				13-907	10/master*	–	–

HI FLO® Series – 6 pc Conversion Kit							
--------------------------------------	--	--	--	--	--	--	--

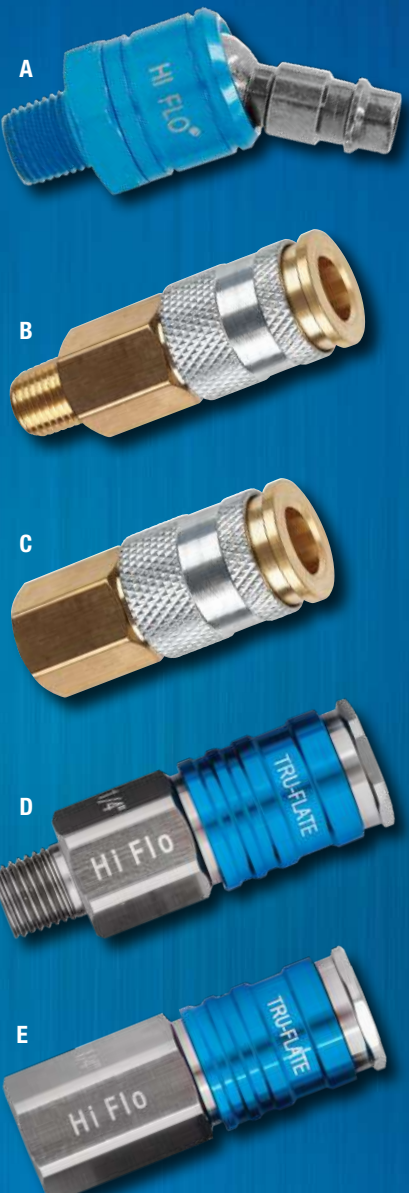
Aluminum Push-To-Connect Couplers Feature:

- Lightweight T6 aluminum construction.
- Extreme corrosion resistance: stainless steel ball bearings, spring and valve.
- 70+ CFM, almost three times the air flow of standard couplers.
- Includes one each of 13-924, 13-934, 12-934, and two pieces of 12-924.

Male	1/4"	F	Aluminum	580-50ACK	10/box	–	–
------	------	---	----------	-----------	--------	---	---

* - Carded display package

WARNING: Due to their large size, these couplers should not be connected or disconnected if the line pressure exceeds 40 PSI.
WARNING: Couplers and plugs are intended for use on compressed air lines only. All have maximum rated working pressure of 300 PSI.



PLUGS & COUPLERS



ST-Style Design

These couplers and plugs have no valves. Smooth straight-thru bore allows maximum flow. Made from solid brass bar stock. Couplers have stainless steel springs and balls. Excellent for carpet cleaners, vacuum service and pressure washers. Interchanges with Parker ST type.

Thread	NPT	Style	Metal	Tru-Flate	Quantity	Amflo	Quantity
Straight-Thru Series – Plugs							
Male	3/8"	A	Brass	–	–	CPST5B	10/box
Female	1/4"	C	Brass	–	–	CPST17B	10/box
Female	3/8"	B	Brass	–	–	CPST6B	10/box
Straight-Thru Series – Couplers							
Female	1/4"	D	Brass	–	–	CST4B	10/box
Female	1/4"	E	Brass	–	–	CST17B	10/box
Female	3/8"	D	Brass	–	–	CST6B	10/box
Female	1/2"	D	Brass	–	–	CST8B	10/box

*Models A & B fit D and model C fits E



D-Style Design

Diamond-U are primarily found on the West Coast. Plated steel couplers have hardened steel balls and stainless steel plugs. Plugs are heat treated to reduce wear on critical mating surfaces.

Thread	NPT	Style	Metal	Tru-Flate	Quantity	Amflo	Quantity
Diamond-U Series – Plugs							
Male	1/4"	F	Steel	–	–	CP33	10/box
Female	1/4"	G	Steel	–	–	CP34	10/box
Diamond-U Series – Couplers							
Male	1/4"	H	Steel	–	–	C31	10/box
Female	1/4"	I	Steel	–	–	C30	10/box

WARNING: Due to their large size, these couplers should not be connected or disconnected if the line pressure exceeds 40 PSI.
WARNING: Couplers and plugs are intended for use on compressed air lines only. All have maximum rated working pressure of 300 PSI.

PLUGS & COUPLERS



Universal Design

Can be used with T, I/M and A Design 1/4" plugs, eliminating confusion among designs. Deluxe push-to-connect style makes coupling quick and easy. Heavy duty brass or steel construction means longer life. Unique tubular valve design allows greater air flow, up to 35 CFM. 3 Year Leak Proof Guarantee!

Thread	NPT	Style	Metal	Tru-Flate	Quantity	Amflo	Quantity
Combo Coupler® • 3 Year Leak-Proof Guarantee							
Male	1/4"	A	Steel	13-520	10/box	–	–
Male	1/4"	A	Steel	13-522	10/master*	–	–
Male	1/4"	A	Brass	13-512	10/box	–	–
Male	1/4"	A	Brass	13-513	10/master*	–	–
Female	1/4"	B	Steel	13-524	10/box	–	–
Female	1/4"	B	Steel	13-528	10/master*	–	–
Female	1/4"	B	Brass	13-514	10/box	–	–
Female	1/4"	B	Brass	13-515	10/master*	–	–
Hose Barb	1/4"	C	Steel	13-531	10/box	–	–
Hose Barb	1/4"	C	Brass	13-530	10/box	–	–
Hose Barb	1/4"	C	Brass	13-517	10/master*	–	–

*Carded display package

Safety Design

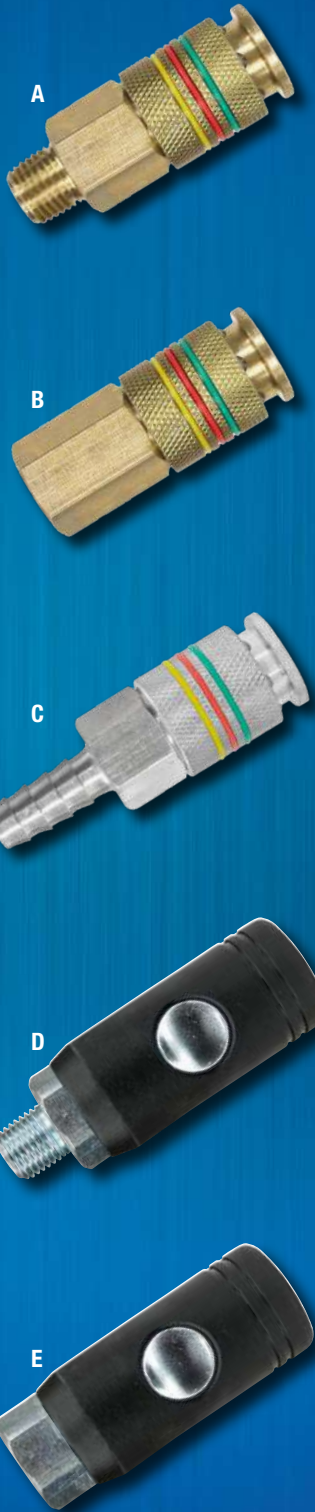
Safety couplers are made from light-weight, corrosion resistant composite and aluminum materials making them safer to use. The push button safety release eliminates air pressure and blow back when connecting and disconnecting air hoses and tools. Safety couplers are designed to be used with I/M and T style plugs. Available in black, hi-vis orange for added safety.

- Couplers can be used with I/M and T style plugs.
- Push-Button 2-step safety design. Push once to vent the air line, push again to release the plug.
- Composite body is perfect for use with paint guns.

Thread	NPT	Style	Color	Metal	Tru-Flate	Quantity	Amflo	Quantity
Safety Couplers								
Male	1/4"	D	Black	Steel/Aluminum	13-229	5/master*	–	–
Female	1/4"	E	Black	Steel/Aluminum	13-239	5/master*	–	–

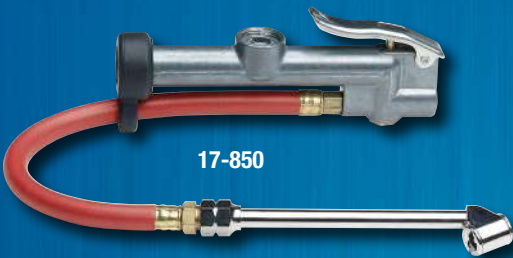
*Carded display package

WARNING: Due to their large size, these couplers should not be connected or disconnected if the line pressure exceeds 40 PSI.
WARNING: Couplers and plugs are intended for use on compressed air lines only. All have maximum rated working pressure of 300 PSI.





101TF



17-850



17-855



17-860



150E-RET
150

•Tru-Flate •Amflo

Standard Duty Inflator Gauge

Zinc die cast housing with zinc plated steel lever. Swivel dual foot chuck and replaceable brass cartridge. Complete with bleeder valve to easily release tire over inflation. Calibrated 20-120 PSI in 2 PSI increments.

With 12" Hose and Dual Foot Chuck.

101TF Carded. 10/master.

Deluxe Inflator Gauges

Rugged zinc casting, with rubber bumper guard to protect against damage if dropped, and easy-to-read recessed sight glass. Replaceable valve assembly and gauging cartridge. Calibrated 10-120 PSI in 2 lb. steps.

With 12" Hose and Dual Foot Chuck.

17-850 Carded. 10/master.

With 24" Hose and Clip-On Chuck.

17-855 1/box.

Deluxe Straight-On Inflator Gauges with Bleeder Valve

Same high quality inflator gauge but with a convenient bleeder valve to enable the operator to "zero" the gauge and release pressure during filling. Allows the operator to stand away from the tire being inflated and thus meets OSHA regulation No. 1910.177.

With 36" Hose and Straight-On Dual Foot Chuck.

17-860 1/box.

NOTE: Because of the internal construction of the Straight-On Dual Foot Chucks, they can only be installed on Tru-Flate® inflator gauges with bleeder valves.

Bayonet Style Inflator Gauges

Features rubber hose and chrome plated castings with brass internal parts for long life. Solid brass bar is calibrated 10-90 PSI in 2 PSI increments.

With 12" Hose and Straight-On Tapered Chuck.

150E-RET Carded. 5/master.

150 1/box.

150-50 Bulk. 50/box.

•Tru-Flate •Amflo

Heavy Duty Inflator Gauges

Heavy chrome plated castings with protective sleeve over dial tube. Plated steel handle is riveted to body. Solid brass bar is calibrated 10 to 120 PSI in 2 PSI increments.

Highly Accurate Dial Inflator

Easy-to-read dial is calibrated 0 to 160 PSI. Tapered chuck and swivel dual foot make getting into tight spots easy. A must for racing tires and truck fleets.

135 1/box.

Straight-On Tapered Chuck Inflator with 12" hose.

100D Carded. 1/master.

Swivel Dual Foot Chuck Inflator with 12" hose

For use on vehicles with smaller dual wheels.

101D Carded. 1/master.

Straight-On Dual Foot Chuck Inflator

Durable black epoxy finish.

101HD 1/box.

Master Air Inflator Gauges

Inflates and checks pressure of passenger cars, motorcycles and trucks. Has a five ft. hose length. Dual calibrated 10 to 170 PSI and .7 to 12 bar. Calibrated in 2 lb. increments.

3910S Master Air Inflator Gauge with standard bore. 1/box.

Analog Inflator Gauges

12" hybrid hose with clip-on chuck. Dual calibrated 5-174 PSI and 0-12 bar.

17-887 Carded. 10/master.

Digital Inflator Gauges

Users can watch the highly accurate back-lit digital read-outs while inflating or deflating for more precise pressure. The 17-878 is complete with air bleeder valve, 13.5" hose and straight-on dual foot chuck. The 17-877 has a robust pistol grip handle and two stage trigger for inflation and deflation. Complete with 20" swivel hose with bend restrictor and clip-on chuck. Rubber covers protect units in the event of a drop. Measures in PSI, bar, kPa and kgF/cm².

17-877 Carded. 1/master. 0-174 PSI.

17-878 Carded. 5/master. 0-200 PSI.

17-889 With 12" hybrid hose, clip-on chuck and bleeder valve. Carded. 10/master. 5-174 PSI.

Inflator Gauge Components (not shown)

112 12" Hose with Straight-On Chuck 1/box.

113 12" Hose with Dual Foot Chuck. 1/box.

150LW-50 Bayonet Inflator Gauge Body. 50/box.

100LW Heavy Duty Bayonet Inflator Gauge Body. 1/box.

135DG Replacement Dial Gauge. For Amflo 135. 1/box.

163 Replacement Inflator Gauge Valve. For Amflo 150 series. 1/box.



135



100D



101D



101HD



3910S



17-887



17-877



17-878



17-889



•Tru-Flate •Amflo

Air Line Chucks without Shut-Off *for Inflator Gauges only*
Do not use on direct air lines where a shut-off valve is required.

Snap-On Chuck Clip
Converts any single foot chuck to a clip-on chuck. Used with both Direct Lines and Shut-offs.
17-355 Carded. 10/master.

Mini Lock-On Air Chuck with 1/4" Hose Barb
Newer "mini-style" is standard equipment on rim clamp (RC) tire changers.
17-365 Carded. 10/master.

Single Ball Foot Chuck
1/4" FNPT.
17-722 10/box.

Dual Foot Chuck
1/4" FNPT
107 1/box.

"Grip Tite" Chuck
1/4" FNPT. Straight-on air line chuck. Snaps onto standard tire valve and stays put until disconnected.
17-726 1/bag.

Straight-On Chuck
1/4" FNPT, with universal adapter.
127 10/box.

Straight-On Chuck with 1/4" Hose Barb
106-100 Bulk. 100/box.

Clip-On Chuck
1/4" FNPT, with universal adapter.
17-730 10/box.

Straight Lock-On Chuck
1/4" FNPT. Flow-through.
17-732 10/box.

Angled Chuck
1/4" FNPT.
105 10/box.

Air Line Chucks with Shut-Off *not for Inflator Gauge use*
Direct Air Line Chucks have a built-in shut-off valve and therefore cannot be used on inflator gauges. Use when air supply lines come directly from the compressor with no other valve in the line. 1/4" female NPT. 150 PSI maximum air line pressure.

Ball Foot Chucks
17-351 Carded. 10/master. **104** 10/box.

Clip-On Chuck
17-353 Carded. 10/master. **104CA** 10/box.

•Tru-Flate •Amflo

Air Line Chucks with Shut-Off *not for Inflator Gauge use*
17-361 Ball Foot Chuck with 1/4" Hose Barb. Carded. 10/master.
17-362 Straight Lock-On Chuck. 10/box.
17-369 Ball Foot Chuck. 1/4" MNPT. Carded. 10/master.

"Grip Tite" Chuck
Works like a "quick coupler." Snaps onto any standard tire valve and stays put until released.
17-373 Carded. 10/master. **119** 10/box.

Straight-On Chuck
Smaller design for use on those hard-to-reach tire valves.
126 10/box.

Dual Foot Chuck
Dual foot extension for valves on tractors, trucks or buses.
17-383 Carded. 10/master.
17-382 10/box.

Straight-On Dual Foot Chuck
For hard-to-reach inner duals.
17-385 Carded. 10/master. **108** 1/box.
121 12" length. 1/box.

Dual Foot Safety Lock-On Chuck
118D 1/bag.

Locking Straight-On Dual Foot Chuck
Comes with threaded deep well lock nut which locks on valve when tilted.
17-395 Carded. 10/master.
17-396 10/box.
17-398 12" length (14" overall). 5/box.

Large Bore Clip-On Air Chuck
Snaps on the large bore valve when sleeve is moved forward and releases when sleeve is pulled back. 1/4" NPT.
17-392 1/bag.

Air Line Chuck Service Parts *(not shown)*
859W Chuck Washer. For Straight-On and Dual Foot Chucks. 10/box.





18-607



18-613



18-612

•Tru-Flate •Amflo

HI FLO® Blowguns

Tru-Flate HI FLO® Blowguns combine ergonomics with power for an enhanced experience. Durable lightweight aluminum bodies and easy ergonomic grip provides maximum comfort and control, reducing operator fatigue. Complete with handy hang-up hook for easy storage. No tools needed for modular accessories that help with reach, protection and increased air flow. OSHA compliant tips meet or exceed standards. All HI FLO® Blowguns are equipped with 1/4" FNPT threads.

TF1 HI FLO® Blowgun – 40 CFM

- 18-607 Carded. 10/master. Includes Safety Nozzle.
- 18-611 Carded. 10/master. Includes Safety Nozzle and Rubber Tip. (not shown)
- 18-609 Carded. 10/master. Includes Safety Nozzle, Rubber Tip and (2) 12" Extensions. (not shown)
- 18-613 Carded. 10/master. Includes Safety Nozzle, Rubber Tip, Quiet High Flow Tip, (2) 6" Extensions, (3) Inflation Needles and Tip Adapter.

TF3 HI FLO® Blowgun – 50 CFM with larger body and variable trigger for controlled flow.

- 18-608 Carded. 5/master. Includes Safety Nozzle. (not shown)
- 18-612 Carded. 5/master. Includes Safety Nozzle and Rubber Tip.



•Tru-Flate •Amflo

HI FLO® Blowgun Modular Accessories

Add up to six 12" extensions when a longer reach is required.

- 12" Extension (2 pack)
- 18-621 Carded. 10/master.

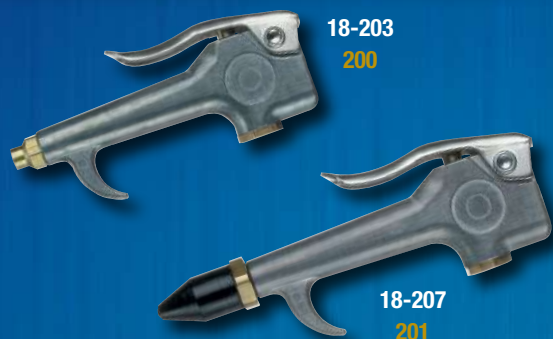


HI FLO® Blowgun accessories & what they're used for

All HI FLO® Blowgun accessories fit both the TF1 & TF3 Blowguns

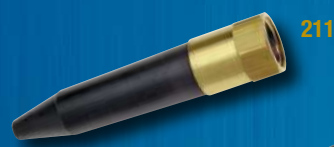
Ref.	Description	Used For
A	Rubber Tip	Inflate air toys, air mattress, and other inflatables that have round inflation valve / plug.
B	Quiet High Flow Tip, OSHA compliant (1910.95) (1910.242)	Use in workshop to blow dirt / dust.
C	Safety Nozzle, OSHA compliant (1910.242)	Use in workshop to blow dirt / dust.
D	Tip Adapter	Use with the Inflator Needles.
E	Inflator Needles	Use to inflate sports equipment and in tight areas or cracks.
F	6" Extension	Use with any of the HI FLO® tips or nozzles when a longer reach is required.
G	12" Extension	Use with any of the HI FLO® tips or nozzles when a longer reach is required.





18-203
200

18-207
201



211



18-221



18-225



18-241



18-249BX

• Tru-Flate • Amflo

Standard Blowguns

All have 1/4" female NPT inlet – allows full line pressure to be used.

IMPORTANT: To comply with OSHA regulations, Standard Blowguns must be used on a regulated air line with a pressure setting not to exceed 30 PSI.

Standard Blowgun

Comfortable thumb lever valve control with hang hook. One-piece nozzle.

18-203 Carded. 5/master. 200 1/box.
200-100 Bulk. 100/box.

Standard Blowgun with Rubber Tip

Oil resistant, soft replaceable rubber tip. Will not mar delicate surfaces. Gives a leak-proof seal against oil passages, fuel lines, etc., when air pressure is needed for cleaning.

18-207 Carded. 5/master. 201 1/box.

Flex-Tipped Blowgun

No handles, levers or buttons. Simply flex rubber nozzle to open. Release, and air shuts off automatically.

211 10/box.
211-100 Bulk. 100/box.

Siphon Spray Blowgun

Combination of a Standard Blowgun and the Siphon Spray Nozzle. Barbed siphon inlet fits 1/4" ID hose or tubing. Use for spray-cleaning engines, applying protective coatings, etc.

18-221 Carded. 5/master.

Pistol-Grip Spray Cleaner

Air-operated siphon cleaning gun handles most cleaning fluids. Ideal for mixing water or soap solutions for pressure cleaning of parts, engines, machinery, floors and walls. Dual air inlet allows handy overhead or under-bench connection. Includes 8' of clear vinyl tubing with a weighted strainer screen and fluid control valve. 10" spray nozzle.

18-225 Carded. 5/master.

Deluxe Blowgun Kit

All purpose blowgun kit with 4 interchangeable nozzles for cleaning and inflating. Perfect for blowing sawdust and grass clippings, drying surfaces or inflating balls, rafts and air mattresses. Complete with Standard Nozzle, Rubber Tip Nozzle, Tapered Inflator Nozzle and Ball Inflator Needle – all in a convenient see-through plastic storage case.

18-241 Carded. 5/master.

7-Piece Blowgun Kit

Multi-use kit for inflating household items. Comes in plastic storage case for added convenience. Kit includes: blowgun, safety tip, rubber tip, two inflation needles, tapered tip and 4" extension.

18-249BX Boxed. 5/master.

• Tru-Flate • Amflo

Standard Blowguns (cont.)

Palm Style Blowgun Kit

Lightweight, ergonomic design blowgun fits comfortably in the palm of your hand. Kit includes 6 interchangeable nozzles, 1/4" air plug and a 12" hose and air chuck assembly.

18-247 Carded. 5/master.

Pistol-Grip Blowgun

Lightweight plastic pistol-grip blowgun with ergonomic design reduces user fatigue. Brass valving and bushing ensure long life.

18-325 Carded. 5/master.

Heavy Duty Angle Tip Blowgun

Heavy duty construction and rubber tip. Excellent for blowing out automatic transmissions.

205ATD Carded. 5/master.

Heavy Duty Blowgun

Use in construction and other rugged applications. Standard 1/8" NPT nozzle thread.

205D Carded. 5/master.

Booster Blowgun

Delivers extra wide spray pattern. Additional air is drawn through holes around nozzle.

226 1/box.

Safety Blowguns

Improved nozzle gives greatly increased performance and yet still meets OSHA regulation 100-1 for 30 PSI "dead head" pressure. Vented nozzle relieves compressed air should nozzle become plugged or obstructed. Heavy duty die-cast body with hang-up hook and 1/4" NPT female inlet.

Button Type Inlet pressure 150 PSI.

18-231 Carded. 5/master.

Lever Type Inlet pressure 150 PSI.

18-233 Carded. 5/master. 204-30 1/box.

Tamper-Proof Lever Type. Safety nozzle cannot be removed from end.

18-237 Carded. 5/master. 204-30A 1/box.



18-247



18-325



226



18-231

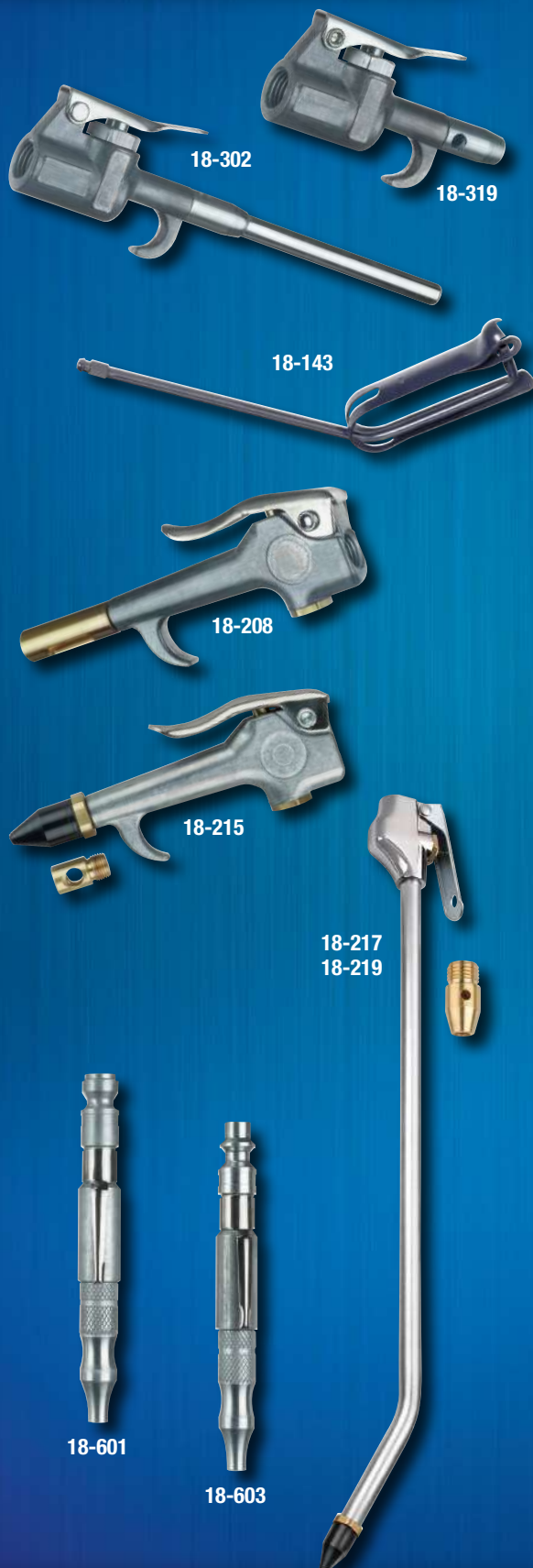


18-233
204-30



18-237

204-30A



• Tru-Flate • Amflo

Safety Blowguns *cont.*

Pocket Size Lever Type Inlet pressure 150 PSI.

18-319 Carded. 5/master.

18-302 Carded. 10/master. With 4" Extension.

Clip-On Safety Blowgun. Chuck style, 8-1/2".
Converts standard ball foot air chuck into a blowgun.

18-143 10/box.

High Volume "Venturi" Action

Delivers more air-to-speed cleaning and drying while using less compressed air. Special venturi nozzle increases air flow to part, yet meets OSHA regulation 100-1. Convenient hang-up hook, comfortable lever and 1/4" NPT female inlet. Inlet pressure 150 PSI.

18-208 1/box.

Safety Blowgun with Rubber Tip & Safety Nozzle

Oil resistant, soft rubber tip seals tight and won't mar finishes. Ideal for cleaning fuel lines, air passages and carburetors. Limits air pressure to 30 PSI, meeting OSHA safety standards. Convenient hang-up hook. 1/4" NPT female inlet. Inlet pressure 150 PSI.

18-215 Carded. 5/master.

Safety Extension Blowgun with Rubber Tip & Safety Nozzle

These multi-function, long reach blowguns come with both a safety nozzle and rubber tip. End of blowgun is bent for hard-to-reach areas.

18-217 With 2' extension. 1/bag. 5/master.

18-219 With 4' extension. 1/bag. 5/master.

Adjustable Safety Pocket Blowguns

A must for home, shop or garage use. Quick and easy to use – just attach to air line coupler and twist knurled nozzle. For 1/4" coupler bodies. Meets OSHA regulation 100-1. Complete with handy pocket clip.

T-Style Design

18-601 Carded. 10/master.

I/M Style Design

18-603 Carded. 10/master.

• Tru-Flate • Amflo

Blowgun Accessories

Blowgun tips and extensions on this page have 1/8" NPT male threads.

Standard Chrome Plated Extension. 1/4" tubing. 6" length.
200E6 1/bag.

Inflation Needles. All 1/8" NPT.
18-245 1-1/4" length. Carded 4 pack. 6/master.

Flexible Metal Extension. Use for air or coolant lines. 8" length.
200F8 1/bag.

Safety Extensions. With safety bypass – cannot be dead-ended.
204E12 12" length. 1/bag.

Safety Nozzle. For Tru-Flate 18-215, 18-231 and 18-233; Amflo 204-30.
97-412 20/box.

Rubber Replacement Tip. For Tru-Flate 18-207, 18-215 and Amflo 201 blowguns.
99-005 Carded. 10/master. **202** 10/box.

Siphon Spray Nozzle. For Tru-Flate 18-221 blowguns.
221 10/box.

Booster Replacement Tip. For Amflo 226 blowguns.
227 1/box.





Male Hose End



Male Swivel Fitting



Female Hose End



Female Swivel Fitting



Hi-Volume Swivel Fitting

• Tru-Flate • Amflo

Barbed Hose Fittings

All brass construction resists rust and will not corrode as easily as other materials. Precision machined to high quality standards. Use with hose clamp or ferrules.

Male Hose End

399	1/8" Hose ID x 1/8" MNPT. 10/box.
404	1/4" Hose ID x 1/8" MNPT. 10/box.
401	1/4" Hose ID x 1/4" MNPT. 10/box.
21-123	1/4" Hose ID x 1/4" MNPT. Carded. 10/master.
398	1/4" Hose ID x 3/8"-24. With O-ring. 10/box.
21-133	5/16" Hose ID x 1/4" MNPT. Carded. 10/master.
406	3/8" Hose ID x 1/4" MNPT. 10/box.
406-100	3/8" Hose ID x 1/4" MNPT. Bulk. 100/box.
21-143	3/8" Hose ID x 1/4" MNPT. Carded. 10/master.
21-147	3/8" Hose ID x 3/8" MNPT. Carded. 10/master.
408	1/2" Hose ID x 1/4" MNPT. 10/box.
608	1/2" Hose ID x 3/8" MNPT. 10/box.
808	1/2" Hose ID x 1/2" MNPT. 10/box.

Male Swivel Fitting

401S	1/4" Hose ID x 1/4" MNPT. 10/box.
------	-----------------------------------

Female Hose End

21-222	1/4" Hose ID x 1/4" FNPT. 10/box.
21-242	3/8" Hose ID x 1/4" FNPT. 10/box.

Female Swivel Fitting

21-323	1/4" Hose ID x 1/4" FNPS. Carded. 10/master.
--------	--

Hi-Volume Swivel Fitting

406S	3/8" Hose ID x 1/4" MNPT. 10/box.
------	-----------------------------------

• Tru-Flate • Amflo

Hose Splicers

Used to connect two air hoses to create a longer hose, or fix a broken hose in the field.

21-423	1/4" Hose ID. Carded. 10/master.
21-433	5/16" Hose ID. Carded. 10/master.
602	3/8" Hose ID. 10/box.
21-467	3/8" Hose ID. Carded. 10/master.
21-488	1/2" Hose ID. 10/box.

360° Swivel Fittings

Eliminates kinked and twisted air line hose by swiveling a full 360°. Barb type and male/female connections. 150 PSI maximum working pressure.

21-601	1/4" MNPT x 1/4" Hose Barb. Carded. 10/master.
21-603	1/4" MNPT x 3/8" Hose Barb. Carded. 10/master.
21-605	1/4" MNPT x 1/4" FNPT. Carded. 10/master.

Hose Repair Kit

Contains all parts necessary to repair a direct air line hose assembly.

- Male Hose End Fitting, 1/4" ID hose x 1/4" MNPT
 - Hose Splicer, 1/4" ID hose
 - 3 Hose Clamps, fits 3/8" ID hose
- 41-303 Carded. 6/master.

Hose Repair Kit

Contains all parts necessary to repair a direct air line hose assembly.

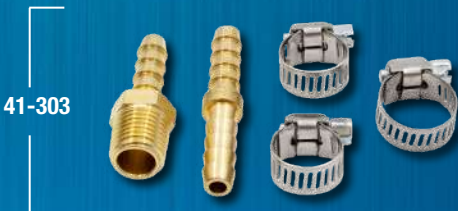
- Male Hose End Fitting, 3/8" ID hose x 1/4" MNPT
 - Hose Splicer, 3/8" ID hose
 - 3 Hose Clamps, fits 3/8" ID hose
- 41-305 Carded. 5/master.



Hose Splicer



360° Swivel Fitting



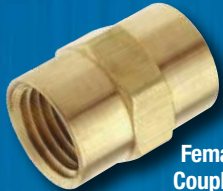
41-303



41-305



Male Coupling



Female Coupling



Female Bushing



Ball-End Adapter



Drain Cock



Reusable Hose Fittings



Safety Valve

•Tru-Flate •Amflo

Pipe Couplings and Adapters

All brass, corrosion resistant material. Allows user to adjust thread sizes from 1/8" NPT through 1/2" NPT with either male or female ends.

Male Couplings

- 21-505 1/4" MNPT x 1/4" MNPT. Carded. 5/master.
- 344 1/4" MNPT x 1/4" MNPT. 10/box.
- 346 3/8" MNPT x 1/4" MNPT. 10/box.
- 366 3/8" MNPT x 3/8" MNPT. 10/box.
- 388 1/2" MNPT x 1/2" MNPT. 10/box.

Female Couplings

- 21-515 1/4" FNPT x 1/4" FNPT. Carded. 5/master.

Female Bushings

- 21-535 1/4" FNPT x 3/8" MNPT. Carded. 5/master.
- 346F 1/4" FNPT x 3/8" MNPT. 10/box.
- 348F 1/4" FNPT x 1/2" MNPT. 10/box.
- 368F 3/8" FNPT x 1/2" MNPT. 10/box.

Ball-End Adapters

- 21-595 1/4" MNPT x 1/4" MNPS with ball socket. Carded. 5/master.

Reusable Hose Fittings

Eliminates the need for hose clamps or ferrules. Heavy duty construction. Designed for fast, easy, yet permanent air-tight connections.

- 22-163 11/16" Hose OD, 3/8" Hose ID, 1/4" MNPT. Carded. 10/master.

Drain Cocks - 150 PSI

- 21-555 1/8" Drain Cock. Carded. 10/master.
- 21-557 1/4" Drain Cock. Carded. 10/master.

Safety Valves

Constructed to ASME standards. Interchangeable with all other ASME valves of the same size and pressure. Furnished with relief pressure preset.

- 21-707 1/4" Safety Valve 125 PSI. Carded. 5/master.
- 21-709 1/4" Safety Valve 150 PSI. Carded. 5/master.

•Tru-Flate •Amflo

Female Crosses

Excellent for running several air lines from a common source. Solid brass.

- 344X 1/4" NPT. 10/box.

Female Tees

Excellent for running 2 air lines from a common source. Solid brass.

- 344T 1/4" NPT. 10/box.

3-Way Manifolds

Supply 3 air tools from one source. Use on air hose end or as permanently fixed bench outlet. No need to disconnect/connect to use different tools. Machined aluminum construction.

1/4" FNPT inlet x 1/4" FNPT outlet.

- 41-125 Carded. 5/master.
- 3404 1/box.

3/8" FNPT inlet x 1/4" FNPT outlet.

- 3406 1/box.

1/2" FNPT inlet x 1/4" FNPT outlet.

- 3408 1/box.

In-Line Swivel Fittings

Permits rotation of fitting without kinking or twisting of hose.

- 344R 1/4" male/female NPT. 10/box.
- 366R 3/8" male/female NPT. 300 PSI. 10/box.

Uniswivel Fitting

Full 360° swivel action. 300 PSI. 1/4" MNPT x 1/4" FNPT.

- 21-607 Carded. 10/master.
- 344U 10/box.

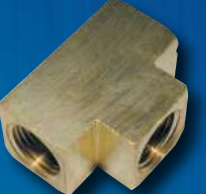
Dual Swivel Fitting

Full 360° swivel action. 300 PSI. 1/4" MNPT x 1/4" I/M plug.

- 21-609 Carded. 10/master.



Female Cross



Female Tee



3-Way Manifold



Uniswivel Fitting



In-Line Swivel Fitting



Dual Swivel Fitting

HI FLO® Automotive Air Tools

Today's air tools are requiring more and more air to function properly, give consumers what they need with Tru-Flate HI FLO® Couplers & Plugs. At 70 CFM, these fittings allow almost three times more air flow than traditional couplers and plugs. Made from T6 Aluminum material, they are corrosion resistant and durable enough to be great in any industry or environment. Be ready for the consumers that need to retrofit their air systems with HI FLO Couplers & Plugs.

1/2" Stubby Impact Wrench

25-513 Retail Box. 3/master.

- Short body for tight spaces
- Multi-stage forward and reverse functions
- Coated handle for better grip
- Twin hammer produces 500 ft/lbs torque

Mini Die Grinder

25-520TF Retail Box. 4/master.

- Air flow: 5.75 CFM
- Air Inlet: 1/4" FNPT
- Free Speed: 25,000 RPM
- Collet Size: 1/4"
- Tools and HI FLO plug included

Air Cut-Off Tool

25-540TF Retail Box. 3/master.

- Air Flow: 8.5 CFM
- Air Inlet: 1/4" FNPT
- Free Speed: 20,000 RPM
- Disc Diameter: 3" (included)
- Tools and HI FLO plug included

Air Hammer w/ Chisels

25-560 Retail Box. 3/master.

- Cushioned handle for better grip
- Air Flow: 6.25 CFM
- Built-in air regulator
- Includes chisel spring, 4 chisels & HI FLO plug

Full-Size HVLP Spray Gun

25-575 Retail Box. 3/master.

- Works for primers, adhesives, base & finishing coats
- 1.4mm nozzle
- 600cc capacity
- 4 CFM air flow
- Includes HI FLO plug, multi-wrench & cleaning brush

Gravity Feed Sand Blaster

25-580 Retail Box. 4/master.

- Used to blast away paint, rust, grime and more with ease
- 600cc capacity
- 3.75 CFM air flow
- Adjustable flow lever
- Includes HI FLO plug

3/8" Air Ratchet & 1/2" Impact Wrench Kit

25-590TF Retail Box. 3/master. IMPACT WRENCH

- Torque: 250 ft/lbs
- Air Flow: 8.25 CFM
- Free Speed: 6,500 RPM
- 1/2" Square Drive
- Air Inlet: 1/4" FNPT
- Built-In Regulator
- Forward/Reverse Switch
- Protective Rubber Bumpers

RATCHET WRENCH

- Torque: 50 ft/lbs
- Air Flow: 6.75 CFM
- Free Speed: 160 RPM
- 3/8" Square Drive
- Air Inlet: 1/4" FNPT
- Forward/Reverse

5-Piece Grinding Stone Set

25-313 Carded. 8/master.

- 1/4" Shank
- For use with most straight or angle die grinders
- Includes: (5) aluminum oxide grinding stones for various applications
 - Pink - general purpose grinding
 - White - fine grinding
 - Gray - coarse grinding

5-Piece, 3" Cut-Off Discs

25-311 Carded. 6/master.

- Includes (5) abrasive cutting discs for air powered cut-off tools
- 3" x 1/16" thick with 3/8" arbor hole
- Designed for cutting metal

10-Piece, 2" Surface Prep Kit

25-319 Carded. 6/master.

- Contains (3) 40-grit sanding disks, (3) 60-grit sanding disks, (1) fine finish prep pad, (1) medium finish prep pad, (1) back-up pad and (1) 1/4" mandrel which easily fits standard 1/4" die grinders.

4-Piece Chisel Set

25-310 Carded. 4/master.

- Contains chisels most frequently used with air hammers
- Chisels are forged from carbon steel and are heat treated for extra strength
- Includes: 5" ripping splitter chisel, 5" weld buster chisel, 5" flat chisel, 5" tapered punch

Chisel Retainer Spring

25-307 Carded. 8/master.

- For air powered chisel/hammer
- Spring allows for quick chisel changes
- Secures chisel during operation of tool for reliable results
- Works with any standard 0.401 shank diameter chisels

6" Dual Action Sander Pad

25-301 Carded. 6/master.

- Standard 5/16" - 24 threads
- Produces consistent and reliable results across a variety of surfaces
- Lightweight design won't slow down the sander, maximizing efficiency

600cc Paint Cup

25-317 Carded. 3/master.

- Lightweight and translucent
- Durable resin construction
- Easy twist off top with air vent

Spray Gun Air Filter

25-305 Carded. 4/master.

- Reduces paint defects by filtering water, oil and particulates from compressed air
- Solvent resistant housing
- Replace filter weekly or more frequently as performance decreases

Gravity-Feed Push-In Paint Filters

25-303 Carded. 12/master.

- Compatible with most gravity-feed spray guns
- # 80 mesh filters debris from paint
- 5-piece retail pack

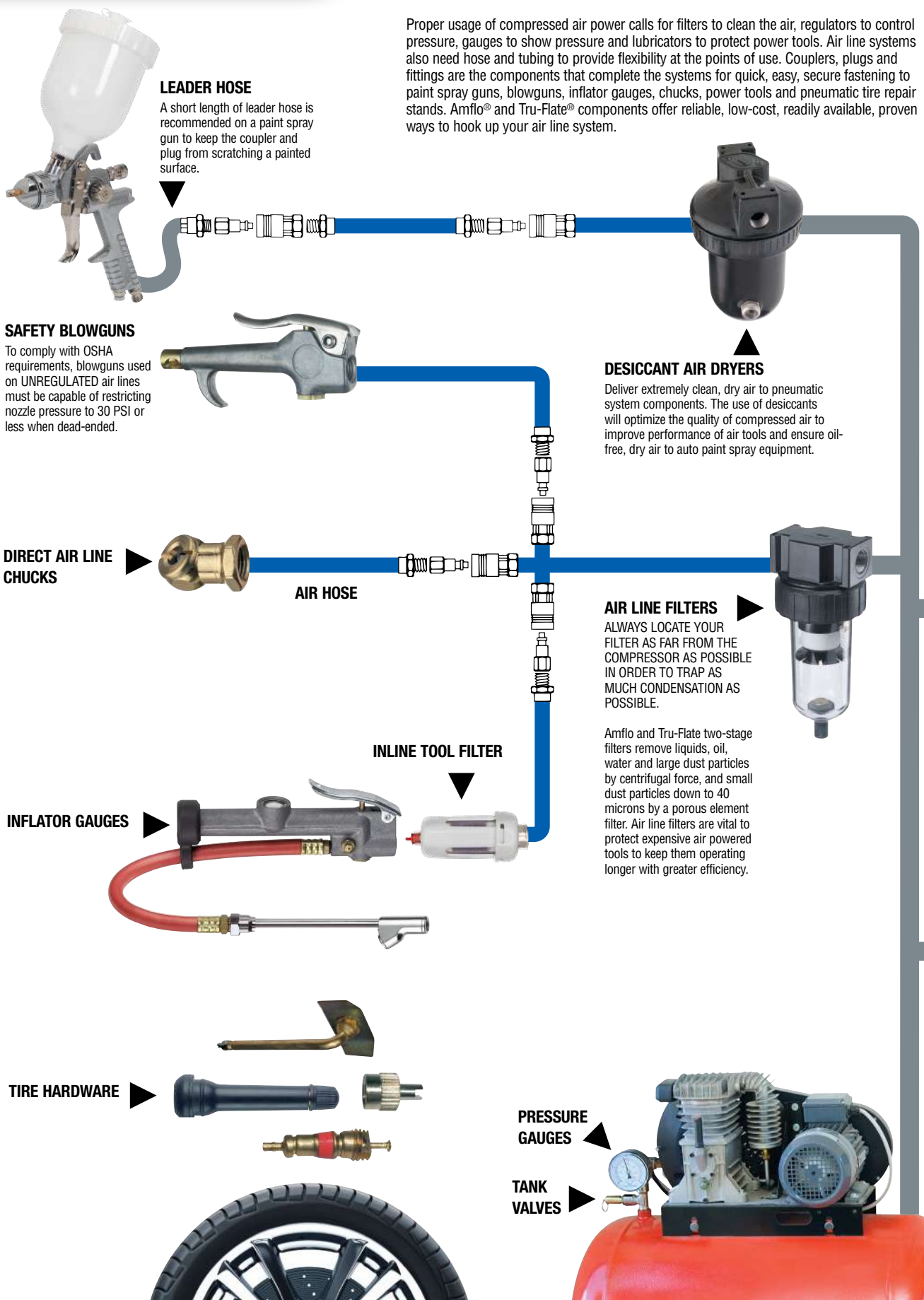


Unleash the FULL Power of Your Air Tools with HI FLO® Couplers & Plugs

- Increased air flow provides maximum torque and optimal performance
- Push-To-Connect design for quick, easy connections
- Durable lightweight T6 aluminum construction
- Corrosion resistant with stainless steel ball bearings

AIR LINE HOOK-UP HINTS

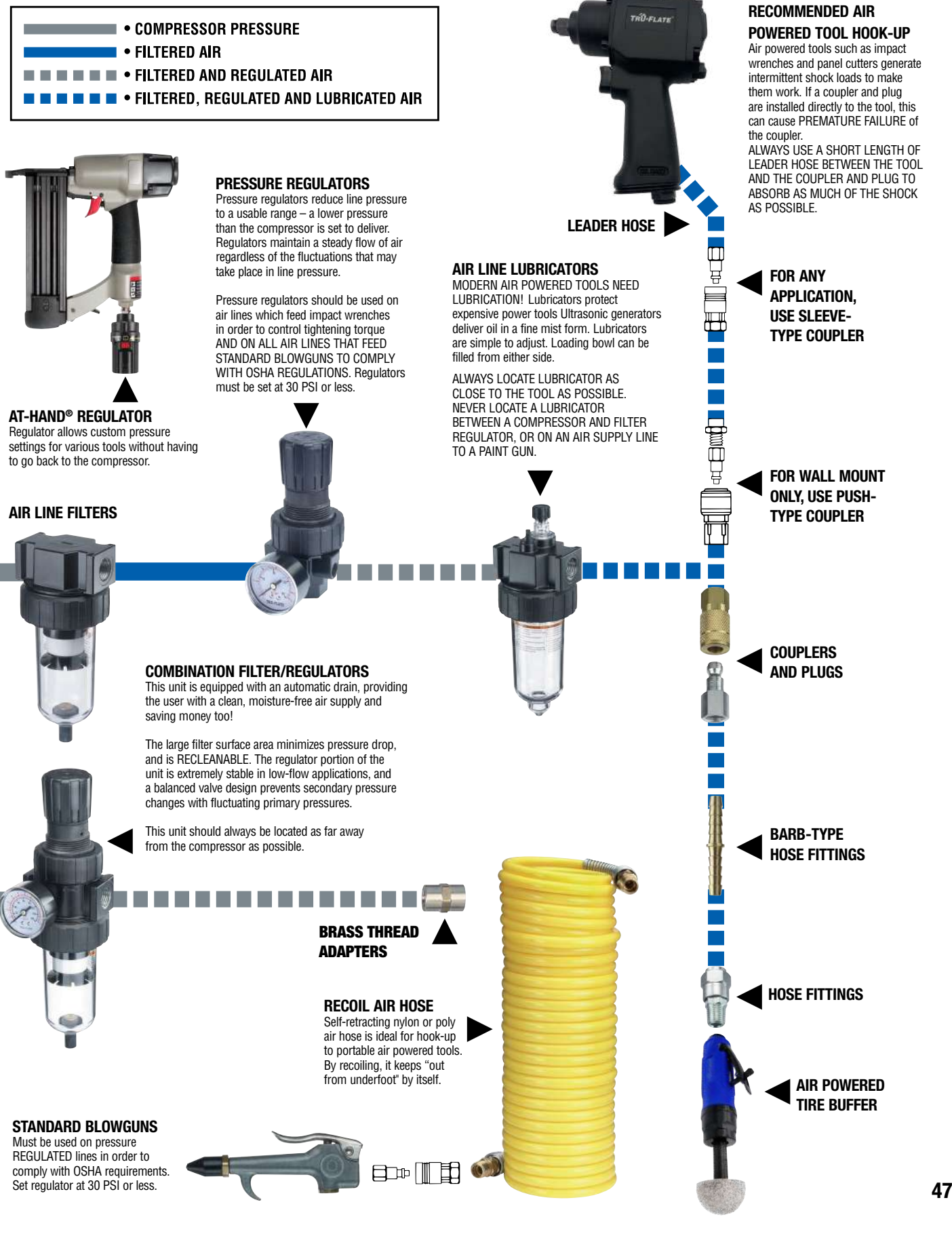
TRU-FLATE® Amflo®



Proper usage of compressed air power calls for filters to clean the air, regulators to control pressure, gauges to show pressure and lubricators to protect power tools. Air line systems also need hose and tubing to provide flexibility at the points of use. Couplers, plugs and fittings are the components that complete the systems for quick, easy, secure fastening to paint spray guns, blowguns, inflator gauges, chucks, power tools and pneumatic tire repair stands. Amflo® and Tru-Flate® components offer reliable, low-cost, readily available, proven ways to hook up your air line system.

AIR LINE HOOK-UP HINTS

TRU-FLATE® Amflo®





• Tru-Flate

Filter / Regulator Combinations (Piggyback)

Accurate pressure regulation with maximum water and dirt separation, provided in a single, compact unit. The filter significantly increases the life of expensive equipment, such as air line tools, valves, cylinders and motors. The regulator employs a solid piston, which resists rupture, cracking or tearing under pressure or high cycle rates. Combination Filter/Regulators have 2 gauge ports and come complete with filter element, pressure gauge and locking knob adjustment. Maximum pressure (polycarbonate bowls): 150 PSI at 125° F. Maximum pressure (metal bowls): 250 PSI at 175° F. Temperature range: 40° F to +125° F w/ poly bowls, 40° F to +165° F w/ metal bowls..

Part No.	Series	Packaging	Port	SCFM†	Drain Type	Microns	Capacity	Bowl Type	Height (in.)
27-243	Mini	Retail*	1/4"	20	Manual	20	1 oz.	Poly	6.25
27-201	Compact	1/box	1/4"	50	Manual	40	5 oz.	Poly w/ Bowl Guard	9.75
27-211	Compact	1/box	3/8"	80	Manual	40	5 oz.	Poly w/ Bowl Guard	9.75
27-221	Standard	1/box	1/2"	100	Manual	40	6 oz.	Metal	9.75
27-231	Standard	1/box	3/4"	110	Manual	40	7 oz.	Metal	9.75

*Full color retail box †Standard cubic feet per minute with 100 PSI inlet pressure, 80 PSI no flow secondary setting and 10 PSI pressure drop.

Air Line Filters

Tru-Flate Air Line Filters are used for all air line applications where efficient filtration is required. Filtration removes airborne solid contaminants, pipe scale, rust, condensate, etc., which may cause wear or failure of pneumatic components. Large filter element surface gives low pressure drop and long element life. The Mini series of air line filters offers a higher degree of filtration. All filters are complete with filter element and either manual or automatic drains. Maximum pressure: 150 PSI at 125° F with polycarbonate bowl and 250 PSI at 175° F with metal bowl. Temperature range: 40° F to +125° F w/ poly bowls, 40° F to +165° F w/ metal bowls.

Part No.	Series	Packaging	Port	SCFM†	Drain Type	Microns	Capacity	Bowl Type	Height (in.)
24-343 (When out order 27-243)	Mini	Retail*	1/4"	21	Manual	5	1 oz.	Poly	4.4
24-301 (When out order 27-301)	Compact	Retail*	1/4"	50	Manual	40	5 oz.	Poly	6.1
27-311	Compact	Retail*	3/8"	75	Manual	40	5 oz.	Poly w/ Bowl Guard	6.25
27-321	Standard	1/box	1/2"	100	Manual	40	6 oz.	Metal	6.25
27-322	Standard	1/box	1/2"	100	Automatic	40	6 oz.	Metal	6.25
27-331	Standard	1/box	3/4"	230	Manual	40	10 oz.	Metal	7.625
27-351	Hi-Flow	1/box	1"	300	Manual	40	29 oz.	Metal	9.4

*Full color retail box †Standard cubic feet per minute with 100 PSI inlet pressure with 5 PSI pressure drop.



• Tru-Flate

Air Line Regulators

Tru-Flate Air Line Regulators employ a solid piston and balanced poppet for excellent performance and longer life. The solid piston design is reliable for a broad range of demanding applications and is impervious to a wide range of lubricating oils and greases. Unlike diaphragms, the solid piston resists rupture, cracking or tearing under pressure, constant flexing or high cycle rates. It is impervious to most chemicals, provides accurate control and assures smooth, uninterrupted operation. Feature 2 gauge ports and include pressure gauge and nonrising, locking knob adjustment. Maximum pressure: 250 PSI. Adjustment pressure: 5-125 PSI.

Part No.	Series	Packaging	Port	SCFM†	Height (in.)
24-444 (When out order 27-444)	Mini	Retail*	1/4"	25	2.9
27-404	Compact	Retail*	1/4"	50	2.25
27-414	Compact	Retail*	3/8"	80	2.25
27-424	Standard	1/box	1/2"	100	2.25
27-434	Standard	1/box	3/4"	220	5.875
24-454 (When out order 27-454)	Hi-Flow	1/box	1"	250	8.5

*Full color retail box †Standard cubic feet per minute with 100 PSI inlet pressure with 5 PSI pressure drop.

Air Line Lubricators

Tru-Flate Air Line Lubricators are designed to provide proportional delivery of lubricating oil over a wide range of air flows. Ideal for most general applications. Externally adjustable with transparent sight dome for 360° visibility. Lubricator should be mounted as close as possible to application to ensure most effective distribution of oil to pneumatic components. Suggested lubricant: Petroleum-based oil of SAE 10 or lighter. Except for the Mini series, Tru-Flate Air Line Lubricators may be filled while the system is under pressure. Maximum pressure: 150 PSI at 125° F with polycarbonate bowl. Temperature range: 40° F to +125° F w/ poly bowls, 40° F to +165° F w/ metal bowls.

Part No.	Series	Packaging	Port	SCFM†	Capacity	Bowl Type	Height (in.)
27-542	Mini	1/box	1/4"	11	1 oz.	Poly	5
27-501	Compact	1/box	1/4"	16	5 oz.	Poly w/ Bowl Guard	7
27-511	Compact	1/box	3/8"	82	5 oz.	Poly w/ Bowl Guard	7
27-521	Standard	1/box	1/2"	142	6 oz.	Metal	7
27-531	Standard	1/box	3/4"	142	10 oz.	Metal	8.4
27-551	Hi-Flow	1/box	1"	175	29 oz.	Metal	8.875

Warning: Oils with adhesives, compounded oils containing solvents, graphite, detergents or synthetic oils must not be used.

†Standard cubic feet per minute at 10 PSI with 5 PSI pressure drop.



56-081

56-082



24-807
24-811

24-801
24-803
24-804

• Tru-Flate

Dessicant Dryers

Our in-line dessicant dryers are engineered to deliver extremely dry compressed air to protect pneumatically operated equipment from the adverse effects of moisture. Maximum rated operating conditions – Metal bowl with sight glass: 250 PSIG (17.2 Bar); 120°F (48°C).

Part No.	Port	Bowl	Flow Rate Max.	Pressure	Quantity
56-081	1/2"	1 qt.	10 SCFM†	300 PSI	1/box

†Standard cubic feet per minute with 100 PSI inlet pressure with 5 PSI pressure drop.

WARNING: These dryers are intended for use in compressed air systems only. Do not use where pressure or temperature may exceed maximum rated operating conditions. These units are not to be used on life support systems or breathing air systems. Failure to follow the recommendations contained in this warning may result in personal injury and/or property damage.

56-082 Replacement Beads. 1 qt.

Air Line Pressure Gauges

Pressed steel case with shatterproof crystal and brass fitting. Used for air, water, oil, or other fluids compatible with brass and bronze. Nominal accuracy 3-2-3%.

Part No.	Mount	Quantity	Thread	PSI Range
24-801	Back	1/master*	1/8" NPT	0-200
24-803	Back	1/master*	1/4" NPT	0-160
24-804	Back	1/master*	1/4" NPT	0-300
24-807	Bottom	1/box	1/4" NPT	0-160
24-811	Bottom	1/box	1/4" NPT	0-300

*Retail clamshell package

Part No.	Filter Element Kit	Bowl Kit	Bracket
FILTER/REGULATOR "PIGGYBACK" COMBINATIONS			
27-201	27-901	27-906	27-918
27-211	27-901	27-906	27-918
27-221	27-901	27-907	27-918
27-231	27-902	27-908	27-919
27-243	27-903	27-909	27-920
AIR LINE FILTERS			
27-301	27-901	27-906	27-921
27-311	27-901	27-906	27-921
27-321	27-901	27-907	27-921
27-322	27-901	27-910	27-921
27-331	27-904	27-911	27-922
27-343	27-903	27-909	27-923
27-351	27-905	27-912	27-924
AIR LINE REGULATORS			
27-404			27-918
27-414			27-918
27-424			27-918
27-434			27-925
27-444			27-920
27-454			27-925
AIR LINE LUBRICATORS			
27-501		27-913	27-921
27-511		27-913	27-921
27-521		27-914	27-921
27-531		27-915	27-922
27-542		27-916	27-923
27-551		27-917	27-924
COMBO UNIT			
27-621	27-901	27-907	27-926

Filter Element Kits



Bowl Kits



Brackets





41-155



41-103



• Tru-Flate • Amflo

Air Regulator with Gauge

Regulates air pressure from compressor to match the recommended air pressure required by air tool. 1/4" female NPT inlet/outlet ports. Install at any angle.

41-155 Clamshell. 5/master. High pressure 200 PSI

In-Line Desiccant Dryer

The In-Line Desiccant Filter/Dryer removes dirt, dust, water and oil from air lines by using a non-toxic, moisture-absorbing silica gel to filter contaminants. Easily installs on any 1/4" NPT air system and is rated up to 125 PSI.

41-103 Carded. 4/master.

• Tru-Flate • Amflo

In-Line Air Tool Oiler

A compact oiler that fastens directly to the air tool. Precisely meters proper amount of oil to the tool only when the tool is in use. No adjustments necessary. 1/4" male NPT outlet, 1/4" female NPT inlet. Use on all air impact guns, air wrenches, body shop air tools and pneumatic hammers requiring 1/4" air lines. Note: Never use motor oil in pneumatic tool. **Prevents "burn-out" of expensive pneumatic tools, stops rust and increases torque up to 25%.**

41-101 Carded. 10/master.

In-Line Air Flow Regulator

Controls in-line air pressure for paint spray guns or other pneumatic tools. Helps keep air flow at exact operating pressures. Use where precise air flow is desired. Compact, lightweight design with gauge, allows for easy "on the tool" air adjustment.

41-135 Carded. 5/master. 0-160 PSI

At-Hand® In-Line Air Tool Regulator

Controls in-line air pressure for paint spray guns or other pneumatic tools. Helps keep air flow at exact operating pressures. Use where precise air flow is desired. Compact, lightweight design with gauge, allows for easy "on the tool" air adjustment.

41-145 Clamshell. 5/master. High pressure 40-140 PSI



41-101



41-135



41-145





1220-1

1220-8



556



2755



6116

40

240



40R
18-506



18-504



43W

• Tru-Flate • Amflo

Lubricants

92 SUS at 75° F. Air Tool Oil is silicone-free.

- 1220-1 Air Tool Oil. 1 pint bottle. 12/master.
- 1220-8 Air Tool Oil. 1 gallon bottle. 4/master.

Specialty Valves

For air tanks, steel barrels, compressors and other pneumatic containers where dependable automatic air valves are needed.

Two-Way Lever Valve

Chrome plated die-cast body. Buna-N seals for air and water.

- 240 1/4" FNPT. 1/box.
- 240-100 1/4" FNPT. Bulk. 100/box.

High Pressure Inflating Connections

These high-pressure inflating connections attach securely by hand or wrench to the valve cap threads of high pressure valves. Can be fitted to gauging and inflating devices by a variety of methods. Various angles permit easy attachment to hard-to-reach valves. Pressure rating 3,000 PSI.

- 2755 For 3/16" flare tube. 3/8"-24 thread. 1/box.
- 556 90° angle. Copper sealing washer. 1/8" MNPT. 1/box.
- 6116 70° angle. Hard fiber sealing washer. 1/8" FNPT. 10/box.

Water / Radiator Valves

Features chrome plated bodies with brass internal parts and self-adjusting U-cup packing. Handles are riveted and spouts are reinforced for long life. Lever controlled operating valve. Alkali, heat, oil and weather resistant.

Water Nozzle.

- 43W 1/box.
- Radiator Faucet. Aluminum. 1/4" FNPT.
- 40 1/box.

Radiator Filler. Rubber Nozzle. 3/4" Female Garden Bibb.

- 18-504 1/box.
- Radiator Faucet. Rubber Nozzle. 1/4" FNPT
- 18-506 1/box.
- 40RD Display Pack. 1/box.
- 40R 1/box.
- 40R-100 Bulk. 50/box.

Mist Coolant

Specially formulated for all metals, including aluminum. Cools and lubricates, inhibits rust. Contains no nitrites.

- 270A Mist Coolant Unit. 1/box.



270A

WARNING: Valves on this page are intended for compressed air lines or water lines only. All have a maximum rated pressure of 300 PSI unless otherwise noted.

• Tru-Flate • Amflo

Tank Valves

For air tanks, steel barrels, compressors and other pneumatic containers where dependable automatic air valves are needed. Equipped with standard valve core and sealing caps for operating pressures to 200 PSI. Allow for external length variations by use of short core only or internal protrusion of core housing into container.

- 38-906 1/8" MNPT. Carded. 10/master.
- 700-100 1/8" MNPT. Bulk. 100/box.
- 38-900 1/8" MNPT, long. Carded. 5/master.
- 38-900-10 1/8" MNPT, long. 10/box.
- 701-2 1/4" MNPT. 10/box.
- 701-2-100 1/4" MNPT. Bulk. 100/box.
- 701-42 1/4" Hose Barb. 10/box.
- 1468L-6 1/8" MNPT. 25/box.
- 1498L-6 1/4" MNPT. 25/box.
- 9166L-8 1/8" MNPT. 10/box.
- 645L-6 1/8" MNPT. 10/box.
- 9166L-198 1/8" MNPT. 250/Box .

Bleeder Valves

Simple push-button for bleeding compressed air lines or liquid systems.

- 710-100 .310-32 thread. Bulk. 100/box.
- 711 1/8" MNPT. 10/box.
- 711-100 1/8" MNPT. Bulk. 100/box.

Driveway Signal Bell

Bell rings when auto tire passes over the hose. Easy to install and wire.

Driveway signal bell. 110 volt. 3 wire ground cord.

- 880 1/box.
- Hose anchor and plug. For 3/8" ID Signal Hose.
- 880N 1/box.

Bicycle Pump Fittings

Screw-on swivel chuck for most hand-operated tire pumps.

- 705 3/16" ID. 10/box.
- 705-100 3/16" ID. Bulk. 100/box.
- 706 1/4" ID. 10/box.
- 706-100 1/4" ID. Bulk. 100/box.

Compressor Repair Parts

Air Tank Conversion Kit. Includes gauge, manifold and hose with fittings.

- 41-907 Carded. 5/master.
- 54-517 Replacement Manifold. 1/box.



38-900

38-906
700

701-2

1498L-6

701-42

9166L-8
9166L-198

711

1468L-6

645L-6

880

880N

705
706

54-517

41-907



41-175



41-225



41-253



41-311



41-257

• Tru-Flate • Amflo

Compressor Accessory Kits

19 PC Air Accessory Kit

Perfect for the do-it-yourselfer! 19-piece kit contains all accessories needed to connect and use a tank-mounted air compressor.

- I/M 1/4" Couplers/Plugs for air line hose and air tool connections
- Air Line Chuck for filling tire valves
- 50 PSI Tire Gauge, to check air pressure
- Blowgun Kit with multiple nozzles for general cleaning and drying
- Ball and tapered nozzles for inflating toys and recreational equipment

41-175 Boxed. 5/master.

20 PC Air Accessory Kit

Perfect for the do-it-yourselfer! 20-piece kit contains all accessories needed to connect and use a tank-mounted air compressor.

- I/M 1/4" Couplers/Plugs for air line hose and air tool connections
- Ball Foot Chuck & Dual Foot Chuck for filling tire valves
- 50 PSI Tire Gauge, to check air pressure
- Thread Seal Tape
- Blowgun Kit with multiple nozzles for general cleaning and drying
- Ball and tapered nozzles for inflating toys and recreational equipment
- Complete with storage box for added convenience

41-225 Boxed. 4/master.

15 PC Air Accessory Kit

Perfect for the do-it-yourselfer! 15-piece kit includes high quality recoil air hose and colored couplers and plugs for use with a tank-mounted air compressor.

- Tru-Match® couplers and plugs
- 23' x 1/4" Poly recoil hose works great in cold weather
- Dial tire gauge
- Blowgun Kit with multiple nozzles for general cleaning and drying
- Ball and tapered nozzles for inflating toys and recreational equipment
- Complete with storage box for added convenience

41-253 Boxed. 4/master.

19 Piece Compressor Accessory Kit

Perfect for the do-it-yourselfer! 19-piece kit contains all accessories needed to connect and use a tank-mounted air compressor.

- Complete with Tru-Match couplers and plugs
- Storage pouch included

41-257 Boxed. 4/master.

PTFE Thread Sealant Tape

For use on male pipe thread connections.

- 1/2" X 22'
- Helps prevents air leaks

41-311 Carded. 6/master.

• Tru-Flate • Amflo

Standard Hose Crimper

Provides production capabilities and "big tool" crimping advantages at a much lower cost. Heavy duty ductile iron castings and hardened steel dies provide long service life and positive crimping. Includes five dies for crimping 1/4" braid to 3/8" double-braided hose. Also works on steel-braided hose.

855 1/box.

Brass Ferrules

Use with hose barb fittings. Make sure ferrule closely matches hose O.D. For use with Amflo Hose Crimper 855.

7321-50	.478" ID ferrule. 50/box.
7322-50	.500" ID ferrule. 50/box.
7323-50	.525" ID ferrule. 50/box.
7325-50	.562" ID ferrule. 50/box.
7326-50	.593" ID ferrule. 50/box.
7327-50	.625" ID ferrule. 50/box.
7328-50	.656" ID ferrule. 50/box.
7329-50	.687" ID ferrule. 50/box.
7330-50	.718" ID ferrule. 50/box.
7331-50	.750" ID ferrule. 50/box.
7332-50	.781" ID ferrule. 50/box.
7333-50	.812" ID ferrule. 50/box.
7334-50	.825" ID ferrule. 50/box.
7335-50	.850" ID ferrule. 50/box.
5029A-50	.900" ID ferrule. 50/box.
7242A-50	.937" ID ferrule. 50/box.

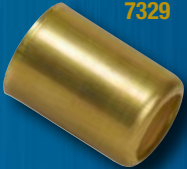
WARNING: The products on this page are designed for use on compressed air lines only. Select fitting to match hose diameter. Fittings must be secured with the proper size crimped-on ferrule. Do not exceed the pressure limitation of the hose and/or air operated devices being used. Failure to follow these directions exactly may cause fittings to separate from hose and may result in personal injury and/or property damage.



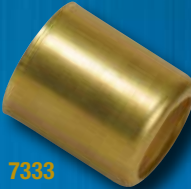
855



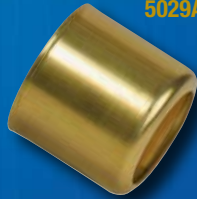
7325



7329



7333



5029A

[illegible]



800.231.4051 | [in](#) [f](#)

#COMBCAT

HIGHLINE WARREN LLC
4500 Malone Rd
Memphis, TN 38118

This Is Time Sensitive
Material Postal Service:
Please Deliver by May 1

FPO

8 40530 12242 7

CHANGE SERVICE REQUESTED

THE FULL LINE OFFERING.

Amflö®
AIR HOSE & ACCESSORIES



LubriMatic®
LUBRICATION PRODUCTS
& ACCESSORIES



TRU-FLATE®
TIRE REPAIR & AIR ACCESSORIES



EXCLUSIVELY AVAILABLE FROM **HIGHLINE
WARREN**